

# PTE CORE

## JANUARY 2026 PREDICTION FILE

---

### VITAL EXAM TOPICS INCLUDED:

- *Respond to a Situation (25 New Scenarios)*
  - *Summarize Spoken Text (High-Frequency Tracks)*
  - *Write Email (2026 Formal/Informal Prompts)*
  - *Answer Short Questions (Latest 2026 Updates)*
  - *Write From Dictation (100+ Semi-Formal Sentences)*
- 

## PREP WITH DALJEET

*\*Your Success is Our Priority\**

### DOCUMENT DETAILS:

- **Edition:** 1s<sup>th</sup> Edition – January 2026
- **Focus:** Core (General Training for Migration)
- **Target Score:** 79+ / CLB 9+ Equivalent

#### **DISCANNER:**

This file is a compilation of high-probability questions based on current exam trends for January 2026. Consistent practice and understanding of PTE Co-scoring criteria are essential for achieving your desired results.

## PREPWITHDALJEET

### Contents

SPEAKING.....	2
Read Aloud.....	2
Repeat Sentence .....	5
Describe Image.....	9
Respond to a Situation .....	24
A few samples Answers .....	26
Answer Short Question .....	28
Summarize Written Text .....	31
Write Email .....	36
READING.....	39
Reading & Writing: Fill in the Blanks .....	39
Re-order Paragraph .....	58
Reading: Fill in the Blanks .....	83
LISTENING .....	103
Summarize Spoken Text .....	103
Fill in the Blanks .....	107
Write from Dictation .....	120

# SPEAKING

## Read Aloud

In the actual exam, you should pause slightly at every **comma**, **period**, and **question mark**. I have inserted a "/" to indicate these natural breathing points and phrasing pauses to help you maintain a steady oral fluency.

---

### PTE Core: Read Aloud Practice

#### 1. The Future of Transportation

The development of electric vehicles is changing the way we travel. / By reducing our reliance on fossil fuels, / these cars help lower carbon emissions in large cities. / Engineers are now working on better battery technology / to increase the distance a vehicle can travel on a single charge. /

#### 2. Urban Gardening

Many people living in crowded cities are starting their own small gardens. / Whether it is on a balcony or a rooftop, / growing your own vegetables provides fresh produce and reduces stress. / Local communities often share resources / to ensure that everyone has access to healthy / and affordable food. /

#### 3. Digital Security

Protecting your personal information online is more important than ever. / Using strong passwords and two-factor authentication / can prevent hackers from accessing your private accounts. / Cybersecurity experts recommend updating your software regularly / to protect against the latest digital threats / and viruses. /

#### 4. The Benefits of Reading

Reading books is a great way to expand your knowledge / and improve your vocabulary. / Whether you prefer fiction or non-fiction, / spending time with a book helps to sharpen your mind / and improve your focus. / Many people find that reading before bed / helps them relax after a long day. /

#### 5. Remote Work Trends

The rise of remote work has transformed the modern professional landscape. / Many employees now have the flexibility to work from home / or a local coffee shop. / While this saves time on commuting, / it also requires a high level of self-discipline / to stay productive throughout the day. /

## PREPWITHDALJEET

### 6. The Importance of Water

Clean water is a fundamental human right / that is essential for health and survival. / However, / many regions around the world still face severe water shortages / due to climate change and pollution. / Conserving water at home is a simple way / to contribute to a more sustainable future for everyone. /

### 7. The Power of Music

Music has the unique ability to influence our emotions / and bring people together. / From classical symphonies to modern pop songs, / different genres can inspire us / or help us relax during difficult times. / Research shows that learning an instrument / can also improve brain function in children. /

### 8. Sustainable Fashion

The fashion industry is moving toward more sustainable practices / to protect the environment. / Many brands are now using recycled materials / and ensuring fair wages for their workers. / As consumers, / choosing high-quality clothing that lasts longer / can help reduce the amount of waste in landfills. /

### 9. Space Exploration

Sending humans to Mars is one of the greatest challenges / for modern science. / Scientists are developing new spacecraft / that can endure long journeys through the solar system. / This exploration could provide valuable insights / into the origins of life / and the future of our own planet. /

### 10. Healthy Eating Habits

Maintaining a balanced diet is key to preventing long-term illnesses. / Incorporating more fruits, / vegetables, / and whole grains into your meals / provides the nutrients your body needs to function well. / It is also important to stay hydrated / and limit the intake of processed sugars. /

### 11. The Role of Teachers

Teachers play a vital role in shaping the minds / of the next generation. / Beyond teaching academic subjects, / they provide guidance and support / to help students reach their full potential. / A good educator can inspire a lifelong love of learning / and critical thinking. /

### 12. Wildlife Conservation

Protecting endangered species is essential for maintaining / the balance of our ecosystem. / Habitat loss and illegal hunting / are the primary reasons why many animals face extinction today. / Conservation programs work to restore natural environments / and raise awareness about the importance of biodiversity. /

### 13. Artificial Intelligence

## PREPWITHDALJEET

Artificial intelligence is becoming a common part of our daily lives. / From virtual assistants on our phones / to advanced algorithms in healthcare, / AI helps us process information faster than ever before. / However, / it is important to consider the ethical implications / of using this technology. /

### 14. Public Speaking Skills

The ability to speak confidently in front of an audience / is a valuable skill in many careers. / It requires careful preparation / and the ability to connect with listeners through clear communication. / Practicing your delivery and maintaining eye contact / can help reduce nervousness and improve your performance. /

### 15. The History of Art

Art has been used throughout history / to document human experiences and cultural values. / From ancient cave paintings to modern digital installations, / artists use different mediums to express their unique perspectives. / Visiting a museum allows us to appreciate / the creativity and craftsmanship of past civilizations. /

### 16. Renewable Energy Sources

Solar and wind power are becoming the most popular forms / of renewable energy. / Unlike coal or oil, / these sources do not produce harmful greenhouse gases. / Investing in green technology is a crucial step / toward reducing our global carbon footprint / and fighting climate change. /

### 17. The Importance of Exercise

Regular physical activity is beneficial for both / physical and mental health. / Even a short daily walk / can improve your cardiovascular fitness and boost your mood. / Exercise releases chemicals in the brain / that help reduce feelings of anxiety / and improve the quality of your sleep. /

### 18. Global Communication

The internet has made it possible to communicate / with anyone in the world instantly. / Social media platforms and video calls / allow us to maintain relationships regardless of distance. / While this connectivity brings many benefits, / it is also important to take breaks / from our digital screens. /

### 19. Financial Literacy

Understanding how to manage your money / is an essential life skill. / Learning how to create a budget / and save for the future / can help you achieve your long-term goals. / It is also wise to understand how interest rates work / before taking out a loan or using a credit card. /

### 20. The Wonders of Nature

## PREPWITHDALJEET

The natural world is full of incredible landscapes / and diverse ecosystems. / From high mountain peaks to deep ocean trenches, / nature provides us with endless opportunities for discovery. / Taking the time to explore the outdoors / reminds us of the beauty / and fragility of our environment. /

### 21. The Scientific Method

Science relies on a systematic process of observation / and experimentation. / By testing hypotheses and analyzing data, / researchers can uncover the laws that govern the universe. / This rigorous approach ensures that scientific discoveries / are based on evidence / rather than personal opinion. /

### 22. Learning a New Language

Being bilingual can open up new opportunities / for travel and career advancement. / Although it takes time and dedication, / the process of learning a new language / helps improve your cognitive abilities. / Immersing yourself in a different culture / is often the fastest way to become fluent. /

### 23. The Importance of Sleep

Getting enough rest is vital for your brain to function / properly during the day. / While you sleep, / your body repairs itself / and your mind processes the information you learned. / Most adults require between seven and nine hours / of quality sleep / to stay healthy and alert. /

### 24. Volunteer Work

Giving back to your community / is a rewarding experience that benefits everyone involved. / Whether you are helping at a local food bank / or cleaning up a park, / volunteering allows you to make a positive impact. / It is also a great way to meet new people / and develop new skills. /

### 25. The Value of Time

Time is one of our most precious resources, / yet it is often the one we waste the most. / Learning how to prioritize tasks / and manage your schedule effectively / can lead to a more balanced and productive life. / It is important to remember / that once time is gone, / it can never be replaced. /

## Repeat Sentence

60 sentences you provided, divided into meaningful chunks with "/" to help you practice the phrasing, rhythm, and intonation required for the **PTE Core Repeat Sentence** task.

---

### PTE Core: Repeat Sentence Practice (1–60)

1. It is clear / that the effects of climate change / will damage the world economy.
2. Major sports on campus / include rugby, / soccer, / and tennis.

## PREPWITHDALJEET

3. Presentation skills / are important to both / university and the workplace.
4. There is / too much information / on this topic.
5. Until you / complete the form, / you cannot attend.
6. Everyone should get / access to art galleries / no matter where they live.
7. We have / three distinctive libraries / which are nationally acclaimed.
8. Experience would be / an advantage / for this managerial role.
9. The library is located / on the north side / of the campus.
10. If you forget your password, / you need to contact / the student centre.
11. To get a further extension, / you need to call / the education executive on 401.
12. The course comprises / 20 hours of lectures, / seminars, / and tutorials each week.
13. There won't be / any space for me / in the car.
14. The books are filled / with drawings of machines / invented when he was a student.
15. The geographic assignment / should be submitted / by the midday of Friday.
16. Leading scientists speculate / that numerous planets / can support life forms.
17. Animals grow / larger and stronger / to hunt better.
18. As a student union member, / we can influence / the change of the university.
19. This small Indian state / is a land of forest valleys / and snowy islands.
20. It's within the framework / that we're making / our survey.
21. Today, we will be discussing / the role of the government / in preventing injustice.
22. I expect a long / and stagnant debate / for a week or two on this issue.
23. Please sort and order / the slides of the presentation / according to topic and speech time.
24. The gap between rich and poor / is not decreasing / rapidly as expected.
25. Higher fees cause the student / to look more critically / at what universities offer.
26. He told me / it was the most / important assignment of all.
27. Would you pass / the material textbook / on the table?
28. You can download / all lecture handouts / from the course website.

## PREPWITHDALJEET

29. You can pay / using cash / or a credit card.
30. Please pass the handouts along / to the rest of the people / in your row.
31. The university / celebrated earth day / by planting trees.
32. 39.5% of California residents / speak a language other than English / at home.
33. You should raise / your concern / with the head of school.
34. We are delighted / to have Professor Robert / to join our faculty.
35. Students are competing / for every place / in the computer courses.
36. The wheelchair lift / will be upgraded / this month.
37. The topic next week / on our column / will be The Nuclear Disarmament.
38. There will be / a guest lecturer visiting / the psychology department next month.
39. I can't attend the lecture / because I have / a doctor's appointment.
40. Globalisation has been / an overwhelmingly urban / and urbanisation phenomenon.
41. A demonstrated ability / to write correct and concise English / is bigotry.
42. He was constantly looking / for ways to bring / industry and agriculture together.
43. Student loans are now / available / for international students.
44. She doesn't care / about anything / but what is honest and true.
45. The real reason / for global hunger / is not the lack of food, but poverty.
46. The part of the story / is the story / of my father.
47. The original Olympic game / is one kind / of original festival.
48. The library is located / at the other side of the campus / behind the student centre.
49. The first person in space / was from / the Soviet Union.
50. The first few sentences / of an essay / should capture the readers' attention.
51. The current statistical evidence / indicates the need / for further research.
52. People with an active lifestyle / are less likely to die early / or to have a major illness.
53. Conferences are always scheduled / on the third Wednesday / of the month.
54. All the assignments / should be submitted / by the end of this week.

## PREPWITHDALJEET

55. Acupuncture is a technique / involved in / traditional Chinese medicine.
56. A study skill seminar / is only for students / who require assistance.
57. A preliminary bibliography / is due / the week before the spring break.
58. Most of the assignments / should be submitted / on the same day.
59. If she doesn't speak the language, / she's not going to sit around / a week waiting for a translator.
60. I will start / with a brief history of the district / and then focus on life in the first half of the 20th century.

Describe Image



**MOVEMENT**



**RESPIRATION**



**GROWTH**

## **CHARACTERISTICS OF LIVING THINGS**



**SENSITIVITY**



**REPRODUCTION**



**EXCRETION**



**NUTRITION**

## PREPWITHDALJEET



Average Seasonal Temperatures by City

City	Summer Temp (°C)	Winter Temp (°C)
London	24	2
New York	29	-3
Sydney	26	18
Tokyo	31	5
Dubai	41	15

[PREPWITHDALJEET](#)

Follow us on

[INSTA](#)

[FACE BOOK](#)

[YOUTUBE](#)

[BLOGGERS](#)

[LINKEDIN](#)

[APP](#)

## PREPWITHDALJEET



## PREPWITHDALJEET



PREPWITHDALJEET

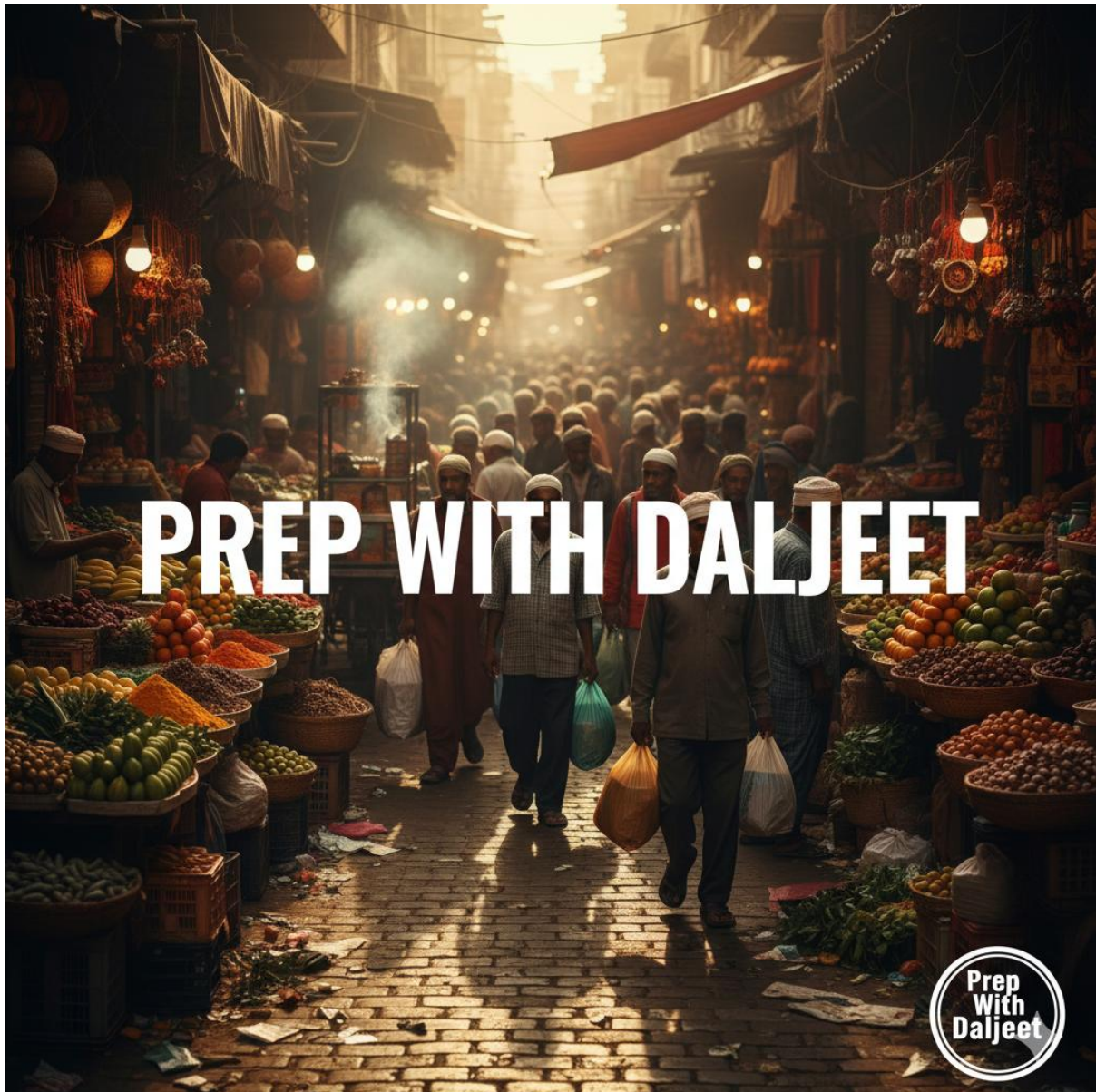
PTE Core Describe Image  
Practice: Children's Park Scene



## PREPWITHDALJEET



[PREPWITHDALJEET](#)



Follow us on

[INSTA](#)

[FACE BOOK](#)

[YOUTUBE](#)

[BLOGGERS](#)

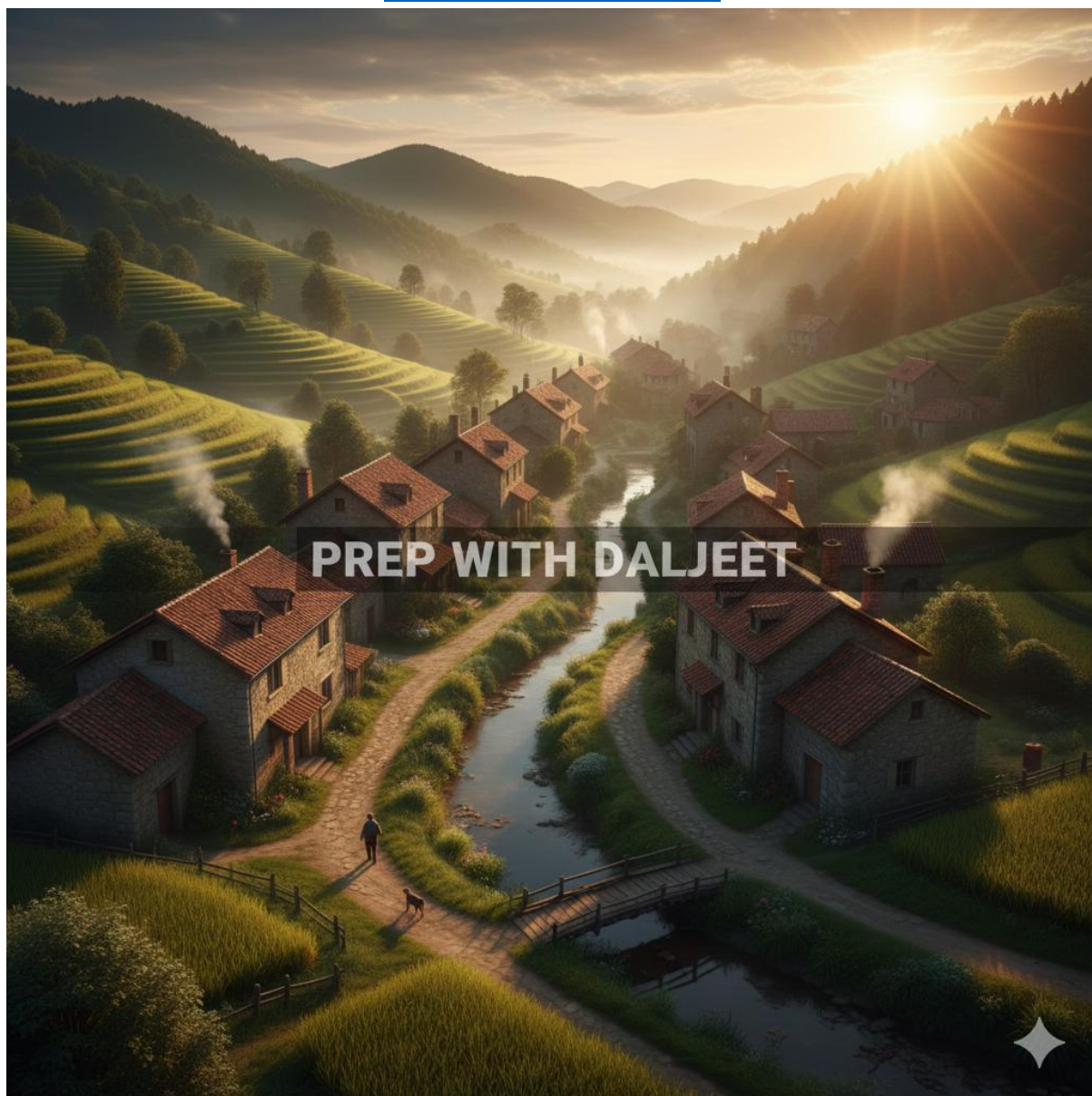
[LINKEDIN](#)

[APP](#)

## PREPWITHDALJEET



[PREPWITHDALJEET](#)



Follow us on

[INSTA](#)

[FACE BOOK](#)

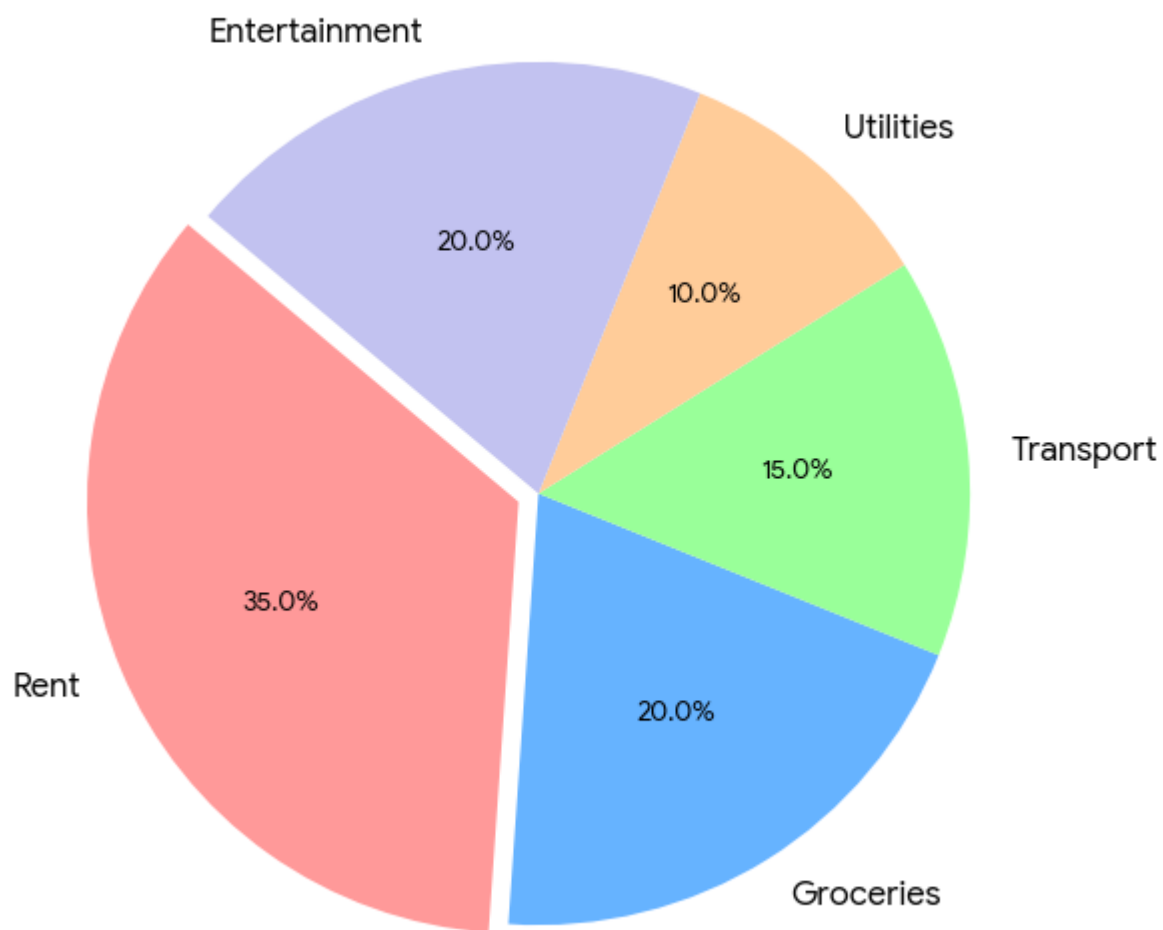
[YOUTUBE](#)

[BLOGGERS](#)

[LINKEDIN](#)

[APP](#)

## Monthly Household Expense Distribution



## PTE Core Describe Image Practice: How an ATM Works



Prep With Daljeet

## PTE Core Describe Image Practice

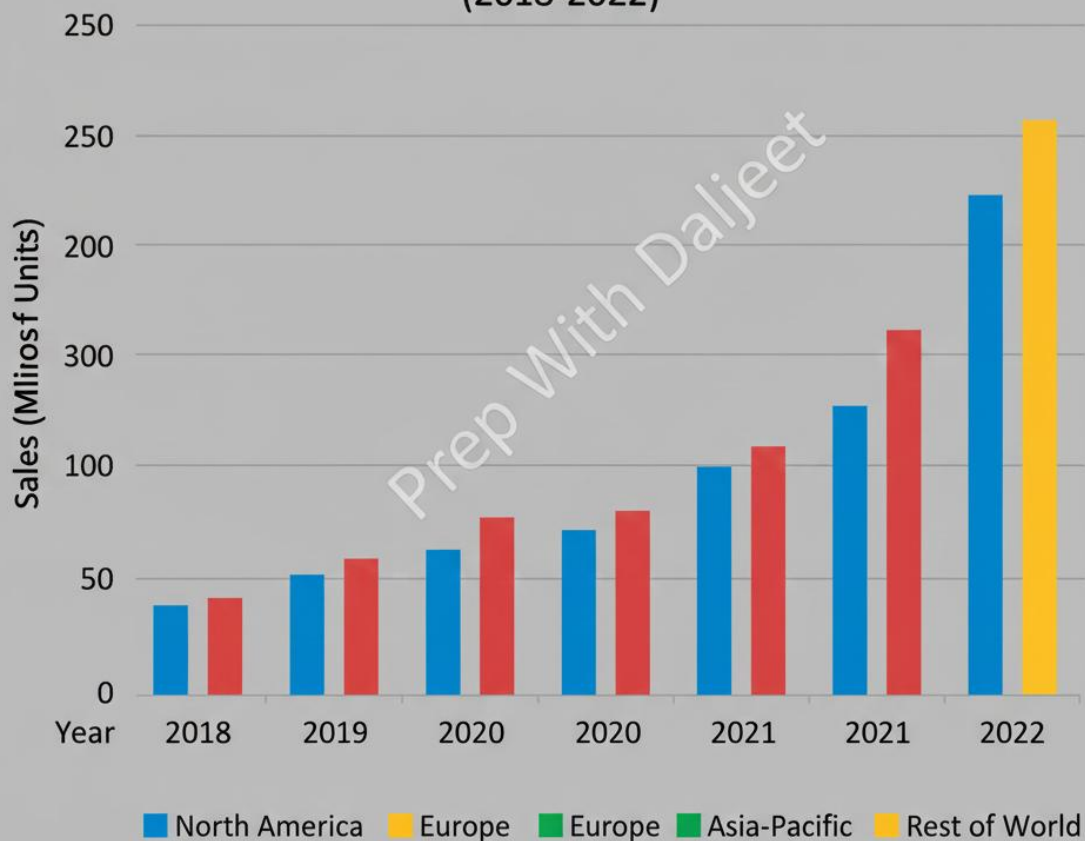
### The Coffee Brewing Process



Prep With Daljeet

**PTE Core****Describe Image Practice**

Annual Smartphone Sales by Region  
(2018-2022)



## PREPWITHDALJEET



## PREPWITHDALJEET



### Respond to a Situation

#### PTE Core: Respond to a Situation Prompts

1. **Parenting:** You have a new baby and find it challenging to manage cooking and childcare simultaneously. Ask a friend for advice on how they balanced these tasks.
2. **Medical Delay:** You were late for a 10 am doctor's appointment. Explain the reason for your delay to the receptionist and ask if you can be seen later today.
3. **Group Project:** A group member is not contributing or responding to messages. Speak to that member and your other teammates about the upcoming deadline.
4. **Restaurant Feedback:** You had a poor experience at a restaurant with long waits and missing items. The manager asks for your feedback. What do you say?
5. **Work Leave:** You need to leave work early to drive a family member to the doctor. Approach your boss to explain the situation and ask for approval.

## PREPWITHDALJEET

6. **Bike Rental:** You overhear colleagues discussing renting bikes. Inquire about the costs, locations, and how you can join them.
7. **Payment Issue:** You are at a salon for a haircut but realize you left your wallet in a taxi. Explain the situation to the stylist and propose a solution.
8. **Lost Property:** You left a bag of college materials at a café yesterday. Call the café, describe where you were sitting, and ask if the bag was found.
9. **Manager's Gift:** You want to buy a retirement gift for your manager. Ask a colleague for advice regarding interests, budget, and group contributions.
10. **Meeting Delay:** You are 10 minutes late for a meeting because your car broke down. Explain the delay to your boss and colleagues.
11. **Academic Support:** You need help with a final project. Approach your teacher to explain your difficulties and ask for specific assistance.
12. **Car Breakdown:** Your car has broken down and a friend is waiting for you. Inform her of the delay and suggest alternative arrangements.
13. **Rescheduling:** You need to change a meeting time with a colleague. Request a new time, suggest alternatives, and check their availability.
14. **Declining Invitation:** You are sick and cannot attend a movie with a friend. Find them in the lunchroom and inform them you can't go.
15. **Home Improvement:** You want to paint the walls of your long-term apartment. Ask your landlord for permission and explain how you will handle it.
16. **Group Decision:** You and your friends want to go out, but everyone wants a different restaurant. Suggest a compromise that satisfies everyone.
17. **Borrowing Items:** It is raining heavily and you don't have an umbrella. Ask a colleague if you can borrow a spare one.
18. **Library Policy:** You manage a library where people leave personal items in study spaces. Address the community members about keeping the space clear.
19. **Family Appointment:** You need to leave work early to accompany a relative to an appointment. Request permission from your employer.
20. **Peer Feedback:** Approach a classmate who is good at History and ask them to provide specific feedback on your latest assignment.
21. **Carpooling:** A colleague lives in your building. Suggest carpooling to work and discuss the logistics and benefits.
22. **Deadline Extension:** You were sick for two weeks and need more time for an essay. Ask your professor for an extension over the weekend.
23. **Roommate Conflict:** Your roommate is consistently messy. Since talking to them didn't work, explain the situation to your Resident Advisor (RA).
24. **Half-Day Request:** You have a family event next week. Ask your supervisor for a half-day off and explain how your work will be covered.

## PREPWITHDALJEET

25. **Noise Complaint:** Your neighbor is playing loud music late at night. Speak to them politely about the volume and suggest a solution.

### A few samples Answers

#### PTE Core: Model Responses (40-Second Targets)

1. **Friend (Parenting):** "Hey! I've been finding it so tough to manage cooking and keeping an eye on the baby lately. How did you do it when yours was little? Do you have any tips for quick meals, or is there a specific time of day you found best for prep? I'd really appreciate some advice."
2. **Receptionist (Doctor):** "Hi there. I'm terribly sorry, but I missed my 10 am appointment because my bus was delayed. Is there any chance the doctor could see me later this afternoon? I'm happy to wait in the lounge if there's a cancellation or a free slot."
3. **Team Member (Group Project):** "Hi everyone. Since our deadline is coming up fast and we haven't heard from [Name] yet, I'm getting a bit worried. [Name], could you let us know if you can finish your part by tomorrow? Otherwise, guys, we might need to divide the remaining work ourselves."
4. **Restaurant Manager (Feedback):** "To be honest, we were quite disappointed. We waited over 45 minutes for our food, the portions were much smaller than expected, and the coffee I ordered never arrived. I think the service speed and communication really need some improvement."
5. **Boss (Leaving Early):** "Hi [Boss's Name], I'm asking if I could leave a bit early today to drive a family member to a medical appointment. I've already finished my urgent reports for the day, and I'll be back in early tomorrow to make up for the time. Would that be okay?"
6. **Colleagues (Bike Rental):** "Hey guys, I heard you talking about renting bikes and it sounds like such a fun idea! I've been wanting to do that. Do you mind telling me where you get them from and how much it usually costs? I'd love to join you next time if you have space!"
7. **Stylist (Payment Issue):** "I am so sorry, but I just realized I left my wallet in the taxi I took to get here. I don't have my cards or cash on me. Is it okay if I call the taxi company now to track it down? Or perhaps I could pay you via an online transfer right away?"
8. **Café Staff (Lost Bag):** "Hi, I'm calling because I think I left my bag at your café yesterday. I was sitting by the window during the lunch rush. It contains all my college materials, which are very important. Has anyone turned in a bag like that by any chance?"
9. **Colleague (Retirement Gift):** "Hey, our manager is retiring soon and I want to get something special. What do you think would be best? I was thinking of a group contribution so we can get a bigger gift. Do you know if they have any specific hobbies we should keep in mind?"
10. **Boss/Colleagues (Late):** "Hi everyone, I'm so sorry for the delay. My car broke down on the way here and the traffic was at a standstill. I've missed the first 10 minutes, but I'm ready to jump right in. Could someone quickly catch me up on the main points?"

## PREPWITHDALJEET

11. **Teacher (Project Help):** "Hi [Teacher's Name], I'm working on my final project but I'm struggling with the data analysis section. Could I possibly book a few minutes during your office hours to get some guidance? I want to make sure I'm meeting all the requirements."
12. **Friend (Car Breakdown):** "Hey, I'm so sorry but my car has just broken down and I'm stuck waiting for a tow truck. I'm definitely going to be late. Please don't wait for me out in the cold—why don't you head to the cafe and I'll call you the moment I'm moving again?"
13. **Colleague (Rescheduling):** "Hi [Name], something urgent has come up and I won't be able to make our meeting at 2 pm. Would you be free to move it to Wednesday morning instead? Please let me know if that works for you, or suggest a time that's better."
14. **Friend (Declining Movie):** "Hey! I'm so sorry to let you down, but I'm feeling really unwell and I don't think I'm up for the movie tonight. I'm going to go home and rest. I hope you guys have a great time, and I'll make it up to you soon!"
15. **Landlord (Painting):** "Hi [Landlord's Name], since I've been a tenant here for a long time, I was wondering if I could paint the bedroom walls. I'd cover all the costs and choose a professional, neutral color. Would you be open to me sending you the color codes for approval?"
16. **Friends (Compromise):** "I know we're all craving different things, so why don't we go to the new international food court downtown? They have Italian, Chinese, and burgers, so everyone can choose what they like and we can still eat together at the same table."
17. **Colleague (Umbrella):** "Hi [Name], it's absolutely pouring out there and I completely forgot my umbrella today. I know you usually keep a spare one at your desk—would you mind if I borrowed it to get to my car? I'll bring it back first thing tomorrow morning."
18. **Community Members (Library):** "Hello everyone. We've noticed a lot of personal items being left on the shared study tables for long periods. To keep the space clear for other users, please take your belongings with you when you leave. Anything left overnight will have to be moved to lost property."
19. **Employer (Family Leave):** "Hi [Name], I'm requesting permission to leave work at 3 pm next Thursday. I need to take a relative to a specialist appointment. I've checked my deadlines and everything is on track, so my absence won't affect the team's progress."
20. **Classmate Ali (Feedback):** "Hi Ali, I know you're doing great in History, so would you mind giving me some feedback on my latest assignment? I'm specifically worried about my conclusion. Do you think the arguments I've made are strong enough to support it?"
21. **Colleague (Carpooling):** "Hey, I just realized we live in the same building! Would you be interested in carpooling to the office? It would help us both save a lot on parking fees and fuel. We could work out a schedule that fits our shifts—what do you think?"
22. **Professor (Extension):** "Hello Professor. I've been quite sick for the last two weeks, and I have a medical certificate to support this. I'm feeling better now, but I need a little more time to finish my essay. Would it be possible to get an extension until Monday?"
23. **Resident Advisor (Roommate):** "Hi, I'm here to discuss a situation with my roommate. I've tried talking to them several times about the noise and the mess, but nothing has changed. It's starting to affect my studies, and I was hoping you could help us mediate the situation."

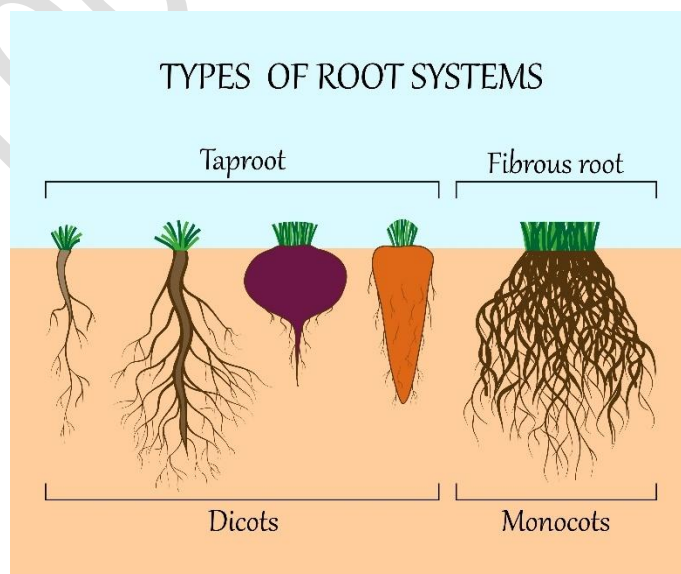
## PREPWITHDALJEET

24. **Supervisor (Half-Day):** "Hi [Name], I'd like to request a half-day off next Friday for a family event. I've already spoken to the team, and Sarah has agreed to cover my emails while I'm out. I'll make sure all my urgent tasks are finished by Thursday afternoon."
25. **Neighbor (Noise):** "Hi, I'm your neighbor from next door. I hate to be a bother, but the music has been quite loud late at night recently, and I'm having trouble sleeping. Would you mind turning it down a bit after 10 pm? I'd really appreciate your help with this."

### Answer Short Question

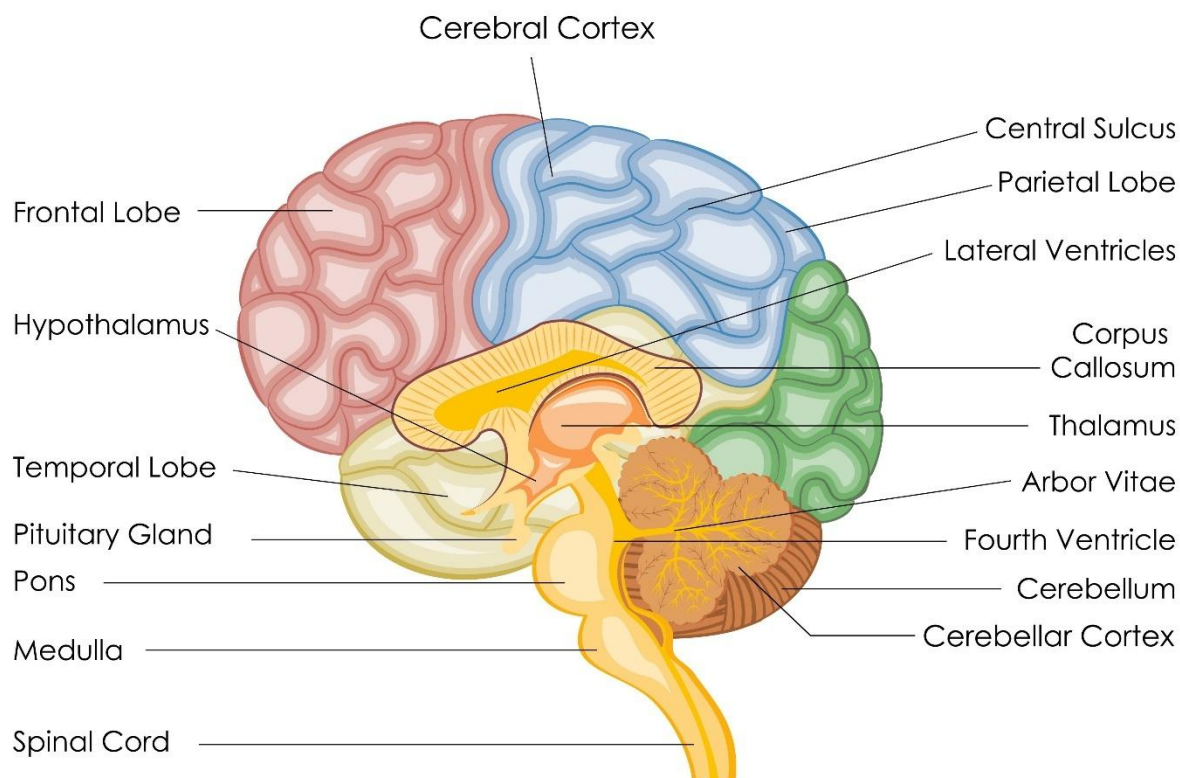
#### 1. Geography & Environment

- **What do you call a narrow strip of land connecting two larger landmasses?** *Answer:* Isthmus
- **Which mountain range separates Europe and Asia?** *Answer:* The Ural Mountains
- **At which place on Earth are days and nights always of equal length?** *Answer:* The Equator
- **Which strait divides Europe from Africa?** *Answer:* Strait of Gibraltar
- **What is the main gas that makes up the Earth's atmosphere?** *Answer:* Nitrogen
- **What is the study of the Earth's climate and weather patterns called?** *Answer:* Meteorology
- **What is the name for a collection of stars?** *Answer:* Galaxy
- **Which part of a plant grows underground?** *Answer:* Roots



## 2. Science & Health

- Which part of the brain controls balance and coordination? *Answer: Cerebellum*



# BRAIN

What force opposes motion between two surfaces in contact? *Answer: Friction*

- Which is the rarest blood group in humans? *Answer: AB negative*
- What organ do cardiologists specialize in? *Answer: The heart*
- What instrument is used to magnify miniscule objects? *Answer: Microscope*

## PREPWITHDALJEET

- **What is the term for organisms capable of living both in water and on land?** *Answer:* Amphibians
  - **What is the winter slumber of certain animals called?** *Answer:* Hibernation
  - **Which word describes something that catches fire very easily?** *Answer:* Flammable / Inflammable
- 

### 3. Business, Politics & Law

- **What do we call the political ideology where private individuals or companies own the means of production?** *Answer:* Capitalism
  - **Which power is used by a president to reject or hold a bill?** *Answer:* Veto
  - **What do we call the document that gives a person the legal right to vote?** *Answer:* Ballot
  - **What is the one-word title for the leader of a municipal government?** *Answer:* Mayor
  - **What does PR stand for in the world of business and advertising?** *Answer:* Public Relations
  - **What do you call a person who belongs to a professional organization?** *Answer:* Member
  - **What do you call a person who works in a company?** *Answer:* Employee
- 

### 4. Technology & Daily Life

- **What is the smallest unit of data in a computer?** *Answer:* Bit
  - **What does SSD stand for in computing?** *Answer:* Solid-state drive
  - **What word describes the action of moving a file from the internet to your computer?** *Answer:* Downloading
  - **Where would you take a coat that has a stubborn stain?** *Answer:* Dry cleaners
  - **What is the first meal of the day called?** *Answer:* Breakfast
  - **What do we call someone who fixes leaking water pipes?** *Answer:* Plumber
  - **If a button has come off a shirt, what two items would you use to put it back on?** *Answer:* Needle and thread
-

## 5. Vocabulary & Language

- **What do you call handwriting that is impossible to read?** *Answer:* Illegible
- **What is the term for studying the origins and histories of words?** *Answer:* Etymology
- **What is the plural form of the word "child"?** *Answer:* Children
- **What is the opposite of the word "noisy"?** *Answer:* Quiet / Silent
- **What is the name of the story you write about your own life?** *Answer:* Autobiography
- **What do you call a person who can speak many different languages fluently?** *Answer:* Polyglot / Linguist

## Summarize Written Text

### 1. Moon's Oxygen

The Moon's surface is rich in minerals containing oxygen, but it is tightly bound in regolith. Extracting it requires electrolysis, a high-energy process used on Earth for aluminum production. To be sustainable, this would require solar energy and massive industrial equipment. While the technology exists, transporting and powering this apparatus on the Moon remains a significant logistical challenge.

### 2. Paying Children

Experts suggest that while children shouldn't be paid for standard household chores, paying for extra tasks can teach business basics and financial literacy. Allowances provide opportunities for children to learn about spending, sharing, and saving for costly goals. This practice, often supported by banking services, helps teenagers understand sacrifice and prepares them for future personal finance and investing.

### 3. Plastic Particles

New research confirms that microplastics are killing fish by disrupting their maturity. Young fish often prefer consuming toxic plastic particles over natural food, leading to starvation. These near-indestructible polymers enter oceans via litter, inadequate sewage systems, and cosmetic microbeads. Because they persist for decades, they pose a severe, long-term threat to global marine ecosystems and reproduction cycles.

### 4. Natural Language

The "nature-nurture" controversy explores whether language is an innate human instinct or a learned behavior. While children clearly learn specific languages through exposure, linguists like Noam

## PREPWITHDALJEET

Chomsky argue that humans are biologically "programmed" with an outline of linguistic structure. This challenged B.F. Skinner's view that language is merely a set of habits built through external observation and systematic reinforcement.

### **5. Telescope**

In 1609, Galileo revolutionized astronomy by enhancing the Dutch "spyglass" into a powerful telescope. By magnifying images up to 30 times, he challenged Aristotle's long-held dogma that celestial bodies were perfect and immutable. Despite the period's reliance on Greek philosophy and astrology, Galileo's observations encouraged a shift toward empirical scrutiny, forever changing how we read the "book of the universe."

### **6. Deep-sea Mineral Resources**

The National Oceanography Center is researching the risks and benefits of deep-sea mining. While submerged volcanoes contain elements like Tellurium, vital for low-carbon solar technology, mining potato-sized nodules causes decadal damage to marine life. As the global population nears nine billion, the ocean is viewed as a source for energy and minerals, necessitating sound scientific evidence to guide future exploitation.

### **7. Levels of Crime**

The British Crime Survey (BCS) is a vital tool for measuring crime by directly interviewing the public about their experiences, including unreported offences. Unlike police records, it remains unaffected by changes in policing practices. This consistent data helps identify high-risk groups and shapes Home Office prevention strategies, providing an essential, long-term insight into real crime levels across society.

### **8. Teaching Machine**

In 1953, B.F. Skinner developed the "teaching machine" to allow students to learn at their own pace, a precursor to modern personalized EdTech. Although initial enthusiasm faded by the 1960s, technology giants today continue to promote digital learning. However, critics emphasize that technology should supplement rather than replace traditional classroom methods, which remain the most reliable model for large-scale education.

### **9. Jonas Salk**

Jonas Salk was a visionary virologist who developed the first safe and effective polio vaccine in 1955. Driven by a desire to alleviate suffering, he famously refused to patent the vaccine, ensuring global accessibility. Salk also founded the Salk Institute to foster collaborative biological research. His

## PREPWITHDALJEET

legacy is defined by his humility and his monumental contribution to eradicating a crippling childhood disease.

### **10. Aftermath of COVID-19**

The COVID-19 pandemic necessitated a robust transition to telepsychiatry due to global stress and disrupted in-office services. While technology barriers like poor internet and the loss of nonverbal cues exist, telepsychiatry has significantly improved access for economically disadvantaged patients. It removes logistical hurdles like transportation and childcare, allowing patients to receive consistent mental health care regardless of their geographical location.

### **11. Office Space**

Research indicates that physical office environments significantly impact employee productivity and psychological well-being. Studies show that greenery, sufficient light, and private spaces improve job satisfaction and health. Beyond aesthetics, improvements to the workplace make employees feel cared for, which fosters company loyalty. Consequently, modern companies are increasingly using office design as a strategic tool to enhance overall performance and retention.

### **12. Role of Innovation**

Innovation is a fundamental driver of economic prosperity, enhancing productivity and global competitiveness. By developing cutting-edge technologies and efficient processes, innovation expands industrial capacity and reduces costs. Furthermore, it fosters entrepreneurship and job creation through new startups. Ultimately, nations that prioritize innovative growth are better equipped to meet evolving consumer demands and maintain long-term economic stability in a competitive marketplace.

### **13. Astronaut**

Becoming a NASA astronaut is a rigorous process requiring US citizenship and a master's degree in a STEM field. Candidates must possess two years of professional experience or significant piloting hours. Beyond academic excellence, NASA seeks strong communicators and collaborators who can pass strict physical examinations for agility and vision. Finally, candidates must meet specific height and weight requirements to fit within spacecraft constraints.

### **14. Happiness**

The "happiness advantage" suggests that a positive mindset drives success, rather than success causing happiness. Research involving 225 studies shows that happy employees are more productive, creative, and resilient under challenge. Because success is a moving target, achieving goals only provides temporary satisfaction. Therefore, cultivating life satisfaction is a prerequisite for better business outcomes, proving that happiness is a functional tool for performance.

### **15. City of London**

Originating in 17th-century coffee houses, London has evolved into the world's leading financial hub, surpassing rivals like New York and Tokyo. Despite historical setbacks like the South Sea Bubble, the "Square Mile" now dominates foreign exchange and global bond markets. The financial district has expanded into Canary Wharf and Mayfair, managing massive funds and paying out billions in bonuses to its growing workforce.

### **16. Written Language**

Written language originated 6,000 years ago during the agricultural revolution as an information technology to manage private property and trade. However, this ancient method of storing and retrieving data is becoming obsolete. Emerging technologies driven by voice, video, and body movement are rapidly replacing text. Consequently, traditional literacy is losing its historical importance as the world shifts toward more intuitive, digital forms of communication.

### **17. Silent Movies**

The 1920s were a transformative era for cinema, dominated by silent films and the rise of global celebrities. Early theaters, known as Nickelodeons, featured live musical accompaniment to amaze audiences. While synchronized sound was successfully recorded in 1923, it took several years for "talkies" to fully replace the silent format. This period laid the foundation for the modern movie industry and the cult of celebrity.

### **18. Prior Knowledge**

Prior knowledge refers to the skills and information a learner brings to a new educational encounter from both formal and informal experiences. For effective learning, teachers must help students "activate" this knowledge and link it explicitly to new topics. This process involves stimulating specific mental schemas, making children think critically about a subject and ensuring they have the necessary foundation to comprehend complex new material.

### **19. Intelligence**

Intelligence varies greatly across specific skills like map reading, vocabulary, and memory. While early psychology emphasized environmental factors and learning as the primary sources of these differences, modern research highlights a balance between nature and nurture. Genetics play a substantial role in shaping intellect and learning ease, but they interact constantly with environmental experiences, such as parental encouragement and the quality of formal schooling.

### **20. Bank Overdraft**

## PREPWITHDALJEET

A bank overdraft is a flexible short-term financing tool that allows companies, such as farms, to manage seasonal cash flow fluctuations. Businesses use it to fund initial costs and repay it once goods are sold. However, disadvantages include being repayable on demand and having variable interest rates. For small companies, the perceived risk often leads to higher costs, making overdrafts a potential source of financial stress.

### **21. Women in University**

Despite female students outperforming men and dominating university enrollment on both sides of the Atlantic, women remain underrepresented in high-level corporate positions. In both the UK and US, women hold the majority of degrees among younger age groups, yet their presence on company boards has only increased fractionally. This suggests that academic success for women has not yet fully translated into equal representation in top-tier leadership roles.

### **22. Oral Storytelling Skills**

A study reveals that oral storytelling skills in African American preschoolers significantly impact their subsequent reading development. Researchers found that strong storytelling traditions within these communities provide a cultural advantage for literacy. While girls generally outperform boys in reading, the ability to tell clear, coherent stories serves as a critical bridge to academic success across various subjects for all children, regardless of their family income level.

### **23. Solar Energy**

Solar power is a truly renewable and clean energy source that produces no greenhouse gases and requires very low maintenance. Unlike wind or hydro systems, it has no moving parts, leading to lower long-term costs. Although its high initial investment and geographical dependency are drawbacks, the environmental benefits and its availability everywhere make it a strong candidate for continued development and widespread residential use.

### **24. Plastic Particles (Re-Summary)**

Microplastics, indestructible polymers from industry and cosmetics, are devastating marine life. Research proves that young fish often mistake these particles for food, leading to starvation and failure to reach reproductive maturity. These contaminants enter waterways through litter and microbeads in cleaners, persisting for decades. This environmental crisis highlights the urgent need for better waste disposal to protect the future of the world's oceans.

### **25. Happiness (Re-Summary)**

Contrary to the belief that success brings happiness, research proves that a positive mindset is actually the driver of high performance. This "happiness advantage" improves productivity and creativity

## PREPWITHDALJEET

during challenges. Since success is a constantly moving target, achieving it only offers fleeting satisfaction. Therefore, business outcomes are better served when individuals prioritize life satisfaction and mental well-being first, leading to more sustainable professional engagement.

### Write Email

#### PTE Core: Write Email Questions (1–25)

1. **Project Extension:** You are working on a report for your manager, Sarah, but you need more time due to a technical issue. Write an email explaining the problem, requesting a three-day extension, and outlining your progress so far.
2. **Gym Membership Cancellation:** You want to cancel your gym membership. Write an email to the manager explaining your reason for leaving, asking about the notice period, and requesting confirmation of the final payment date.
3. **Local Charity Event:** You are organizing a bake sale for a local charity. Write an email to your colleagues inviting them to participate, explaining what the money will be used for, and asking for volunteers to bake or sell items.
4. **Job Reference Request:** You are applying for a new job and need a reference. Write an email to your former supervisor, Mr. Thompson, asking if he would be willing to provide a reference and updating him on your current career goals.
5. **Flight Delay Compensation:** Your recent flight was delayed by six hours. Write an email to the airline's customer service describing the flight details, explaining the inconvenience caused, and requesting financial compensation.
6. **School Field Trip:** You are a teacher planning a trip to the local museum. Write an email to the parents explaining the educational purpose of the trip, the cost per student, and the deadline for returning the permission slips.
7. **Wedding Gift Inquiry:** You and your friends want to buy a joint wedding gift for a colleague. Write an email to the group suggesting a budget, asking for gift ideas, and explaining how to send the money to you.
8. **Software Issue at Work:** You are experiencing problems with the new company software. Write an email to the IT department describing the specific error, explaining how it is affecting your work, and asking for a time when they can fix it.
9. **Community Park Improvement:** You believe the local park needs better facilities. Write an email to the City Council suggesting the installation of more benches, better lighting for safety, and a fenced area for dogs.
10. **Interview Rescheduling:** You have been invited for a job interview on Monday, but you have a prior commitment. Write an email to the HR manager, Ms. Davis, apologizing for the conflict, explaining the reason, and suggesting two alternative dates.
11. **Damaged Rental Car:** You noticed a scratch on your rental car that was not there before. Write an email to the rental agency explaining when you found the damage, providing the car's registration number, and asking about the insurance claim process.

## PREPWITHDALJEET

12. **New Employee Welcome:** You are a team leader. Write a welcome email to a new employee, Jason, including their start date/time, where to park, and what the schedule for their first day looks like.
13. **Public Transport Complaint:** The local bus service has been consistently late. Write an email to the transport authority describing the specific bus route, the frequency of the delays, and how it is impacting commuters.
14. **Conference Registration:** You want to attend a professional conference next month. Write an email to your manager asking for approval to attend, explaining how the conference will benefit the company, and providing the total cost.
15. **Lost Keys in Hotel:** You think you left your house keys in your hotel room after checking out. Write an email to the hotel reception providing your room number, describing the keys, and asking them to mail them to your home address.
16. **Internet Service Outage:** Your home internet has been down for 24 hours. Write an email to your provider, NetConnect, describing the issue, mentioning your previous calls to support, and requesting a credit on your next bill.
17. **University Society Invite:** You are the president of the Photography Club. Write an email to new students explaining what the club does, when the first meeting is, and why they should join.
18. **Doctor's Note Submission:** You were absent from work due to illness. Write an email to your HR department attaching your medical certificate, explaining your recovery status, and confirming your return date.
19. **Wrong Item Delivered:** You ordered a blue jacket online but received a red sweater. Write an email to the online store explaining the mistake, providing the order number, and asking how to return the wrong item for a refund.
20. **Request for Mentorship:** You admire a senior leader in your industry. Write an email to them introducing yourself, explaining why you value their expertise, and asking if they would be open to a brief monthly mentorship meeting.
21. **Noisy Construction Work:** There is loud construction happening in your office building during work hours. Write an email to the building manager explaining the disruption to your meetings and asking for the construction schedule.
22. **Scholarship Application Inquiry:** You are interested in a specific university scholarship. Write an email to the financial aid office asking about the eligibility criteria, the required documents, and the submission deadline.
23. **Catering Quote for Event:** You are planning a small office lunch. Write an email to a catering company asking for a quote for 15 people, mentioning dietary restrictions (vegan/gluten-free), and providing the delivery time.
24. **Bank Account Error:** You noticed an unauthorized transaction on your bank statement. Write an email to your bank manager describing the transaction, confirming you did not make it, and requesting an immediate investigation.

## PREPWITHDALJEET

25. **Farewell to Colleagues:** You are leaving your current job for a new opportunity. Write an email to your teammates thanking them for their support, sharing your last working day, and providing your personal contact information to stay in touch.

Sample answer for **Question 1: Project Extension**.

---

### Prompt Recap

- **Situation:** Requesting a project extension from your manager, Sarah.
- **Points to include:** Explain the technical issue, request a three-day extension, and outline progress so far.

---

### Sample Answer

**Subject:** Request for Extension - Quarterly Report

**Dear Sarah,**

I hope you are having a productive week.

I am writing to respectfully request a three-day extension on the quarterly project report, which was originally due this Friday. Unfortunately, I have encountered a significant technical issue with our data analytics software, which has prevented me from exporting the final statistics required for the conclusion. I am currently working with the IT department to resolve this glitch.

Regarding my progress, I have already completed the market research, the executive summary, and the initial financial analysis. All that remains is the data visualization component. With the extra time, I am confident I can deliver a high-quality final document by next Wednesday.

Thank you for your understanding and support.

**Best regards,**

**[Your Name]**

---

### Why this scores highly:

- **Structure:** It uses a clear opening, middle, and closing.
- **Bullet Points:** It clearly explains the **technical issue** (software glitch), the **extension length** (three days), and the **progress** (research and summary done).
- **Tone:** Professional and proactive (mentioning the IT department shows you are trying to fix the problem).

## READING

### Reading & Writing: Fill in the Blanks

#### Passage 1: The Impact of Remote Work on Urban Economies

The widespread adoption of remote work has triggered a significant (1) \_\_\_\_\_ in the economic landscape of major cities. With fewer employees commuting to central business districts, local service providers, such as cafes and retail shops, have seen a sharp (2) \_\_\_\_\_ in daily foot traffic. This shift has forced urban planners to rethink the purpose of commercial zones and consider (3) \_\_\_\_\_ office spaces into residential units. While remote work offers employees more flexibility, the long-term (4) \_\_\_\_\_ for city tax revenues remain a subject of intense debate among policymakers. Ultimately, the survival of urban centers will depend on their ability to (5) \_\_\_\_\_ to these changing employment patterns.

#### Options

##### Blank Option A    Option B    Option C    Option D

- (1)    disruption    stability    tradition    improvement  
 (2)    decline        increase    growth    surplus  
 (3)    converting    removing    ignoring    building  
 (4)    implications    benefits    solutions    histories  
 (5)    adapt            resist        return    ignore

#### Answers

##### Blank Answer

- 1        disruption  
 2        decline  
 3        converting  
 4        implications  
 5        adapt

#### Passage 2: Consumer Psychology and Brand Loyalty

In a highly competitive market, understanding the psychology behind consumer choice is (1) \_\_\_\_\_ for brand success. Many companies use emotional branding to create a deep (2) \_\_\_\_\_ between their products and the consumer's personal identity. This strategy aims to foster long-term loyalty, making customers less likely to switch to a competitor based solely on (3) \_\_\_\_\_. However, in the digital age, brand loyalty is increasingly fragile as social media allows for the rapid

## PREPWITHDALJEET

spread of negative reviews. To maintain a positive reputation, firms must ensure that their marketing promises (4) \_\_\_\_\_ with the actual quality of the customer experience. Brands that fail to deliver on their core values often face a swift (5) \_\_\_\_\_ in market share.

### Options

**Blank Option A   Option B   Option C   Option D**

- (1)   vital            optional    secondary   irrelevant
- (2)   connection   distance   barrier    conflict
- (3)   price            location    tradition    color
- (4)   align            conflict    differ       ignore
- (5)   reduction    expansion   stability    growth

### Answers

**Blank Answer**

- 1        vital
- 2        connection
- 3        price
- 4        align
- 5        reduction

### Passage 3: The Ethics of Data Privacy

As organizations collect vast amounts of personal information, the ethical (1) \_\_\_\_\_ of data privacy have become a primary concern for the public. Consumers are increasingly wary of how their data is being used, shared, and (2) \_\_\_\_\_ by third-party companies. While data analytics can provide highly (3) \_\_\_\_\_ services and recommendations, it also raises questions about individual autonomy and consent. Governments around the world are responding by introducing stricter (4) \_\_\_\_\_ to protect citizen data. For businesses, maintaining transparency about data practices is no longer just a legal requirement but a fundamental (5) \_\_\_\_\_ for building consumer trust.

### Options

**Blank Option A   Option B   Option C   Option D**

- (1)   dimensions   solutions   benefits   accidents
- (2)   monetized    protected   ignored    deleted
- (3)   personalized   generic    random    limited

## PREPWITHDALJEET

**Blank Option A    Option B    Option C    Option D**

- (4)    legislation    rewards    options    traditions
- (5)    component    obstacle    luxury    secondary

### Answers

#### Blank Answer

- 1    dimensions
- 2    monetized
- 3    personalized
- 4    legislation
- 5    component

### Passage 4: Sustainable Agriculture and Food Security

With the global population expected to reach nearly 10 billion by 2050, the need for sustainable agricultural practices is more (1) \_\_\_\_\_ than ever. Traditional farming methods often rely heavily on chemical fertilizers, which can lead to soil (2) \_\_\_\_\_ and water pollution. In contrast, sustainable agriculture focuses on long-term ecological balance by using techniques such as crop rotation and organic pest control. These methods not only protect the environment but also help ensure global food (3) \_\_\_\_\_ for future generations. However, transitioning to these practices requires significant (4) \_\_\_\_\_ in research and farmer education. Ultimately, the goal is to produce enough food to meet demand without (5) \_\_\_\_\_ the health of our planet.

### Options

**Blank Option A    Option B    Option C    Option D**

- (1)    urgent    optional    unlikely    rare
- (2)    degradation    improvement    stability    expansion
- (3)    security    scarcity    failure    conflict
- (4)    investment    neglect    resistance    distraction
- (5)    compromising    helping    improving    ignoring

### Answers

#### Blank Answer

- 1    urgent

**Blank Answer**

- 2 degradation
- 3 security
- 4 investment
- 5 compromising

**Passage 5: The Evolution of Higher Education**

The traditional model of higher education is currently being (1) \_\_\_\_\_ by the rise of online learning platforms and specialized certification programs. Many students are now seeking more (2) \_\_\_\_\_ and affordable alternatives to the four-year university degree. This shift is particularly evident in the technology sector, where practical skills often hold more (3) \_\_\_\_\_ than a formal academic background. In response, many universities are incorporating digital tools and vocational training into their (4) \_\_\_\_\_ to remain relevant. While the value of a comprehensive campus experience remains high, the future of education will likely involve a more (5) \_\_\_\_\_ approach that combines traditional and digital methods.

**Options****Blank Option A   Option B   Option C   Option D**

- (1) challenged supported ignored stabilized
- (2) flexible rigid expensive complex
- (3) weight history silence doubt
- (4) curricula records expenses traditions
- (5) hybrid solitary ancient limited

**Answers****Blank Answer**

- 1 challenged
- 2 flexible
- 3 weight
- 4 curricula
- 5 hybrid

**Passage 6: The Psychology of Procrastination**

## PREPWITHDALJEET

Procrastination is often misunderstood as a simple lapse in time management; however, psychologists suggest it is actually a mechanism for (1) \_\_\_\_\_ difficult emotions. When faced with a task that induces anxiety, individuals may turn to distractions for temporary (2) \_\_\_\_\_. This avoidance creates a cycle of guilt, which further hinders productivity. To overcome this, experts recommend breaking projects into (3) \_\_\_\_\_ steps. Developing a consistent routine is also (4) \_\_\_\_\_ for maintaining focus. Ultimately, addressing emotional triggers is the most (5) \_\_\_\_\_ way to change these patterns.

### Options

**Blank Option A Option B Option C Option D**

- (1) regulating ignoring creating rewarding
- (2) relief burden conflict fatigue
- (3) achievable complex distant infinite
- (4) beneficial optional rare accidental
- (5) effective rapid simple temporary

### Answers

**Blank Answer**

- 1 regulating
- 2 relief
- 3 achievable
- 4 beneficial
- 5 effective

### Passage 7: The Role of Public Libraries

In the digital era, public libraries have evolved into dynamic community (1) \_\_\_\_\_. They provide free access to the internet and workshops, which are vital for bridging the "digital divide" for those who do not have (2) \_\_\_\_\_ technology at home. As physical book circulations change, the demand for electronic resources continues to (3) \_\_\_\_\_. City officials recognize that investing in libraries is a (4) \_\_\_\_\_ strategy for social inclusion. Despite the rise of the internet, libraries remain a (5) \_\_\_\_\_ part of the urban social fabric.

### Options

**Blank Option A Option B Option C Option D**

- (1) hubs obstacles secrets ruins

## PREPWITHDALJEET

Blank	Option A	Option B	Option C	Option D
(2)	adequate	scarce	hidden	expensive
(3)	expand	vanish	stabilize	decrease
(4)	vital	minor	secondary	risky
(5)	fundamental	temporary	optional	historical

### Answers

#### Blank Answer

- 1 hubs
- 2 adequate
- 3 expand
- 4 vital
- 5 fundamental

### Passage 8: Workplace Diversity

Organizations that prioritize diversity often experience higher levels of innovation and financial (1) \_\_\_\_\_. By bringing together different backgrounds, companies benefit from a wider range of (2) \_\_\_\_\_. However, leaders must also create an environment where all employees feel (3) \_\_\_\_\_ and respected. When staff believe their contributions are valued, their level of (4) \_\_\_\_\_ increases significantly. Therefore, a commitment to diversity is a strategic (5) \_\_\_\_\_ for any modern business.

### Options

Blank	Option A	Option B	Option C	Option D
(1)	performance	failure	stability	tradition
(2)	approaches	barriers	limitations	accidents
(3)	empowered	ignored	restricted	isolated
(4)	engagement	turnover	silence	absence
(5)	advantage	obstacle	burden	risk

### Answers

#### Blank Answer

- 1 performance

## PREPWITHDALJEET

### Blank Answer

- 2 approaches
- 3 empowered
- 4 engagement
- 5 advantage

### Passage 9: Renewable Energy

Transitioning to renewable energy is crucial for nations seeking to balance growth with environmental (1) \_\_\_\_\_. Many countries have solar resources but lack the (2) \_\_\_\_\_ to harness them. Moving away from fossil fuels can improve public health in rapidly growing (3) \_\_\_\_\_ centers. While initial costs are high, long-term savings make it a (4) \_\_\_\_\_ investment. Ultimately, the adoption of renewables will play a major role in achieving global climate (5) \_\_\_\_\_.

### Options

#### Blank Option A    Option B    Option C    Option D

- |     |                |             |           |           |
|-----|----------------|-------------|-----------|-----------|
| (1) | protection     | destruction | ignore    | tradition |
| (2) | infrastructure | history     | records   | distance  |
| (3) | industrial     | rural       | remote    | isolated  |
| (4) | sustainable    | wasteful    | temporary | risky     |
| (5) | targets        | failures    | secrets   | barriers  |

### Answers

#### Blank Answer

- 1 protection
- 2 infrastructure
- 3 industrial
- 4 sustainable
- 5 targets

### Passage 10: Social Media Journalism

Social media has fundamentally changed how news is distributed and (1) \_\_\_\_\_. Today, anyone with a smartphone can share news, leading to increased (2) \_\_\_\_\_ for social issues. However, the

## PREPWITHDALJEET

speed of social media also makes it easier for unverified information to (3) \_\_\_\_\_ rapidly. News organizations are struggling to maintain credibility while competing for the limited (4) \_\_\_\_\_ of digital audiences. Modern journalism must balance speed with a commitment to (5) \_\_\_\_\_.

### Options

**Blank Option A Option B Option C Option D**

- (1) consumed ignored deleted created
- (2) awareness silence distance confusion
- (3) circulate vanish stabilize decrease
- (4) attention location expense history
- (5) integrity bias secrecy silence

### Answers

**Blank Answer**

- 1 consumed
- 2 awareness
- 3 circulate
- 4 attention
- 5 integrity

### Passage 11: The Psychology of Color

Marketing experts often use the psychology of color to (1) \_\_\_\_\_ consumer behavior and brand perception. For instance, blue is frequently associated with trust and stability, which is why many financial institutions use it in their logos. In contrast, red can create a sense of (2) \_\_\_\_\_, often used for clearance sales. While these associations can be powerful, they are not universal and can vary based on cultural (3) \_\_\_\_\_. Understanding these nuances is (4) \_\_\_\_\_ for global brands aiming to maintain a consistent message. Ultimately, the right color choice can significantly (5) \_\_\_\_\_ a product's market success.

### Options

**Blank Option A Option B Option C Option D**

- (1) influence ignore prevent replace
- (2) urgency boredom peace silence
- (3) backgrounds climates prices heights

## PREPWITHDALJEET

**Blank Option A    Option B    Option C    Option D**

- (4)    crucial            optional    secondary    rare
- (5)    enhance            damage    restrict    forget

### Answers

#### Blank Answer

- 1      influence
- 2      urgency
- 3      backgrounds
- 4      crucial
- 5      enhance

### Passage 12: Sustainable Tourism

Sustainable tourism aims to minimize the negative impacts of travel on the environment and local (1) \_\_\_\_\_. As international travel becomes more accessible, popular destinations are facing the challenge of "over-tourism." To combat this, some cities have implemented visitor (2) \_\_\_\_\_ or restricted access to fragile landmarks. Travelers are also being encouraged to support local businesses and choose eco-friendly (3) \_\_\_\_\_. While these measures may increase the cost of a trip, they are necessary for the (4) \_\_\_\_\_ of natural and cultural heritage. Responsible travel ensures that future generations can (5) \_\_\_\_\_ the same wonders we see today.

### Options

**Blank Option A    Option B    Option C    Option D**

- (1)    cultures            climates    markets    prices
- (2)    quotas            rewards    secrets    gifts
- (3)    options            barriers    distractions    excuses
- (4)    preservation    destruction    removal    neglect
- (5)    enjoy            ignore    avoid    delete

### Answers

#### Blank Answer

- 1      cultures
- 2      quotas

**Blank Answer**

- 3 options
- 4 preservation
- 5 enjoy

**Passage 13: Remote Work and Productivity**

The debate over whether remote work increases or decreases productivity continues to (1) \_\_\_\_\_ among corporate leaders. Proponents argue that the lack of a commute and fewer office distractions allow employees to focus more (2) \_\_\_\_\_. Conversely, critics suggest that the lack of face-to-face interaction can lead to a breakdown in team (3) \_\_\_\_\_. Many companies are now settling on a "hybrid" model as a middle ground. This approach requires clear communication and the use of digital (4) \_\_\_\_\_ to keep projects on track. Success in a remote environment depends heavily on an individual's level of self-(5) \_\_\_\_\_.

**Options****Blank Option A Option B Option C Option D**

- (1) persist vanish stabilize decline
- (2) effectively randomly poorly slowly
- (3) cohesion conflict distance silence
- (4) platforms barriers expenses secrets
- (5) discipline doubt interest support

**Answers****Blank Answer**

- 1 persist
- 2 effectively
- 3 cohesion
- 4 platforms
- 5 discipline

**Passage 14: Artificial Intelligence in Healthcare**

Artificial Intelligence is playing an increasingly (1) \_\_\_\_\_ role in modern medicine, particularly in the field of diagnostics. AI algorithms can analyze medical images with a level of speed and (2)

## PREPWITHDALJEET

\_\_\_\_\_ that often surpasses human capability. This technology allows for the early detection of diseases, which is vital for successful treatment. However, the integration of AI also raises ethical questions regarding data (3) \_\_\_\_\_ and the loss of the "human touch" in care. Medical professionals must be trained to work (4) \_\_\_\_\_ with these new tools. Ultimately, AI should be seen as a way to (5) \_\_\_\_\_ human expertise, not replace it.

### Options

**Blank Option A    Option B    Option C    Option D**

- |     |            |           |          |           |
|-----|------------|-----------|----------|-----------|
| (1) | prominent  | hidden    | minor    | secondary |
| (2) | accuracy   | confusion | delay    | expense   |
| (3) | privacy    | growth    | wealth   | comfort   |
| (4) | alongside  | against   | without  | rarely    |
| (5) | complement | ignore    | restrict | delete    |

### Answers

**Blank Answer**

- 1     prominent
- 2     accuracy
- 3     privacy
- 4     alongside
- 5     complement

### Passage 15: The Importance of Soft Skills

In today's job market, technical qualifications are often not enough to (1) \_\_\_\_\_ a position. Employers are placing a higher value on "soft skills," such as emotional intelligence, adaptability, and (2) \_\_\_\_\_. These traits enable employees to collaborate effectively and navigate the social complexities of the workplace. While hard skills can be learned through formal education, soft skills are often developed through (3) \_\_\_\_\_ and self-reflection. Organizations that prioritize these skills tend to have higher levels of employee (4) \_\_\_\_\_. As automation takes over routine tasks, the human element of work becomes even more (5) \_\_\_\_\_.

### Options

**Blank Option A    Option B    Option C    Option D**

- |     |          |           |         |          |
|-----|----------|-----------|---------|----------|
| (1) | secure   | ignore    | avoid   | lose     |
| (2) | teamwork | isolation | silence | conflict |

## PREPWITHDALJEET

**Blank Option A      Option B    Option C    Option D**

- (3)    experience    records    theories    books
- (4)    retention      turnover    absence    stress
- (5)    indispensable   optional    outdated    rare

### Answers

#### Blank Answer

- 1      secure
- 2      teamwork
- 3      experience
- 4      retention
- 5      indispensable

### Passage 16: Urban Farming

Urban farming is gaining popularity as a way to improve food security and reduce the carbon (1) \_\_\_\_\_ of city dwellers. By growing produce in vacant lots or on rooftops, communities can access fresh, local food while reducing transportation costs. These projects also help to (2) \_\_\_\_\_ local residents and provide educational opportunities about nutrition. However, urban farmers often face challenges such as limited space and soil (3) \_\_\_\_\_. Despite these obstacles, the movement continues to (4) \_\_\_\_\_ as people become more conscious of where their food comes from. Integrating agriculture into city planning is a key step toward more (5) \_\_\_\_\_ urban living.

### Options

**Blank Option A      Option B    Option C    Option D**

- (1)    footprint      shoes      price      height
- (2)    engage        ignore    restrict    avoid
- (3)    contamination   fertility    abundance    wealth
- (4)    expand        vanish    stabilize    decline
- (5)    sustainable    industrial    temporary    crowded

### Answers

#### Blank Answer

- 1      footprint

**Blank Answer**

- 2 engage
- 3 contamination
- 4 expand
- 5 sustainable

**Passage 17: Cyber Security in Business**

As businesses increasingly move their operations online, the threat of cyber-attacks has become a (1) \_\_\_\_\_ concern. A single data breach can result in massive financial losses and permanent damage to a company's (2) \_\_\_\_\_. To protect themselves, firms must invest in sophisticated security software and regular employee training. Many attacks are the result of "phishing" emails, which trick staff into revealing sensitive (3) \_\_\_\_\_. Therefore, fostering a culture of "cyber-awareness" is just as important as the technology itself. Companies that fail to prioritize security are (4) \_\_\_\_\_ to significant risks. In the digital age, being proactive about safety is an (5) \_\_\_\_\_ part of business strategy.

**Options**

- |     | <b>Blank</b> | <b>Option A</b> | <b>Option B</b> | <b>Option C</b> | <b>Option D</b> |
|-----|--------------|-----------------|-----------------|-----------------|-----------------|
| (1) | constant     | rare            | minor           | temporary       |                 |
| (2) | reputation   | price           | location        | history         |                 |
| (3) | credentials  | stories         | secrets         | books           |                 |
| (4) | vulnerable   | protected       | resistant       | immune          |                 |
| (5) | essential    | optional        | secondary       | rare            |                 |

**Answers****Blank Answer**

- 1 constant
- 2 reputation
- 3 credentials
- 4 vulnerable
- 5 essential

**Passage 18: The Decline of Cash**

## PREPWITHDALJEET

The world is moving steadily toward a "cashless society," driven by the convenience of mobile payments and digital (1) \_\_\_\_\_. In many developed nations, physical currency is rarely used for everyday transactions, with many businesses now preferring card-only payments. While this shift offers speed and security, it also raises concerns about financial (2) \_\_\_\_\_ for those without bank accounts. Critics argue that a total move away from cash could leave vulnerable populations behind. Furthermore, digital transactions leave a data trail that raises questions about personal (3) \_\_\_\_\_. Despite these issues, the trend toward digital finance seems (4) \_\_\_\_\_. Governments must now find ways to ensure that this transition is (5) \_\_\_\_\_ for everyone.

### Options

**Blank Option A Option B Option C Option D**

- |     |              |           |           |           |
|-----|--------------|-----------|-----------|-----------|
| (1) | banking      | records   | history   | secrets   |
| (2) | exclusion    | growth    | wealth    | comfort   |
| (3) | privacy      | wealth    | height    | weight    |
| (4) | irreversible | temporary | stable    | declining |
| (5) | inclusive    | difficult | expensive | rare      |

### Answers

**Blank Answer**

- 1 banking
- 2 exclusion
- 3 privacy
- 4 irreversible
- 5 inclusive

### Passage 19: The Value of Internships

Internships have become a standard part of the transition from university to the (1) \_\_\_\_\_. They provide students with the opportunity to apply theoretical knowledge in a real-world setting and gain practical experience. Furthermore, internships allow young professionals to build a network of industry (2) \_\_\_\_\_, which can be vital for future job searches. However, there is ongoing debate regarding unpaid internships, which some argue create (3) \_\_\_\_\_ for those from lower-income backgrounds. To be truly beneficial, an internship should offer meaningful tasks and quality (4) \_\_\_\_\_. When structured correctly, these programs are a win-win for both the student and the (5) \_\_\_\_\_.

### Options

## PREPWITHDALJEET

### Blank Option A   Option B   Option C   Option D

- |     |            |         |           |          |
|-----|------------|---------|-----------|----------|
| (1) | workforce  | library | classroom | gym      |
| (2) | contacts   | secrets | books     | history  |
| (3) | barriers   | paths   | bridges   | options  |
| (4) | mentorship | silence | ignore    | restrict |
| (5) | employer   | student | teacher   | stranger |

### Answers

#### Blank Answer

- 1      workforce
- 2      contacts
- 3      barriers
- 4      mentorship
- 5      employer

### Passage 20: Biodiversity and Climate Change

Biodiversity is not just about protecting individual species; it is about maintaining the complex (1) \_\_\_\_\_ that support life on Earth. Climate change is currently the greatest threat to global biodiversity, as rising temperatures alter habitats and disrupt food chains. Many species are unable to (2) \_\_\_\_\_ to these rapid changes and face the risk of extinction. This loss of variety can weaken entire ecosystems, making them more susceptible to disease and collapse. Conservation efforts are now focusing on creating "wildlife corridors" to help animals (3) \_\_\_\_\_ as their environments change. Protecting nature is (4) \_\_\_\_\_ for our own survival, as we rely on these systems for food, water, and air. Global cooperation is the only way to (5) \_\_\_\_\_ this crisis.

### Options

#### Blank Option A   Option B   Option C   Option D

- |     |            |          |           |          |
|-----|------------|----------|-----------|----------|
| (1) | ecosystems | markets  | prices    | stories  |
| (2) | adapt      | ignore   | delete    | restrict |
| (3) | migrate    | stay     | sleep     | hide     |
| (4) | vital      | optional | secondary | rare     |
| (5) | address    | ignore   | forget    | cause    |

### Answers

## PREPWITHDALJEET

### Blank Answer

- 1 ecosystems
- 2 adapt
- 3 migrate
- 4 vital
- 5 address

### Passage 21: The Power of Mentorship

Mentorship is a powerful tool for professional development, offering a bridge between experience and (1) \_\_\_\_\_. A good mentor provides guidance, shares industry knowledge, and helps their mentee navigate career challenges. This relationship is particularly beneficial for those entering a new field or stepping into (2) \_\_\_\_\_ roles for the first time. Beyond professional advice, mentors can offer emotional support and help build a mentee's (3) \_\_\_\_\_. While formal programs exist, many of the most successful mentorships develop (4) \_\_\_\_\_ over time. For the mentor, the process is also rewarding, as it allows them to give back to their (5) \_\_\_\_\_.

### Options

#### Blank Option A Option B Option C Option D

- (1) ambition boredom silence history
- (2) leadership junior minor secondary
- (3) confidence doubt fear silence
- (4) organically randomly poorly slowly
- (5) profession family rival enemy

### Answers

#### Blank Answer

- 1 ambition
- 2 leadership
- 3 confidence
- 4 organically
- 5 profession

---

### Passage 22: Sustainable Building Design

## PREPWITHDALJEET

The construction industry is one of the largest contributors to global carbon emissions, leading to a surge in (1) \_\_\_\_\_ building design. Architects are now prioritizing energy efficiency by using natural light, better insulation, and renewable energy sources like solar panels. These "green" buildings not only reduce environmental impact but also lower long-term (2) \_\_\_\_\_ costs for owners. Furthermore, using sustainable materials like recycled steel or bamboo can significantly decrease a project's carbon (3) \_\_\_\_\_. While the initial investment in green technology can be higher, the environmental benefits are (4) \_\_\_\_\_. As urban areas continue to grow, sustainable construction is becoming a (5) \_\_\_\_\_ rather than a luxury.

### Options

**Blank Option A    Option B    Option C    Option D**

- (1)    sustainable    industrial    temporary    crowded
- (2)    operational    hidden    initial    secret
- (3)    footprint    price    height    weight
- (4)    undeniable    minor    secondary    rare
- (5)    necessity    option    burden    risk

### Answers

**Blank Answer**

- 1    sustainable
- 2    operational
- 3    footprint
- 4    undeniable
- 5    necessity

### Passage 23: The Evolution of Music Consumption

The way we listen to music has been (1) \_\_\_\_\_ transformed by the rise of digital streaming platforms. In the past, listeners purchased physical albums or waited for their favorite songs to play on the radio. Today, millions of tracks are available (2) \_\_\_\_\_ at the touch of a button. This shift has given independent artists a platform to reach global audiences without the need for a major record (3) \_\_\_\_\_. However, it has also raised concerns about how much artists are paid for their work. While physical sales like vinyl have seen a small (4) \_\_\_\_\_, streaming remains the dominant force. The music industry continues to (5) \_\_\_\_\_ as it balances technology with creativity.

### Options

## PREPWITHDALJEET

**Blank Option A Option B Option C Option D**

- |     |            |         |           |         |
|-----|------------|---------|-----------|---------|
| (1) | radically  | rarely  | slowly    | poorly  |
| (2) | instantly  | rarely  | never     | slowly  |
| (3) | label      | book    | secret    | store   |
| (4) | resurgence | decline | silence   | fall    |
| (5) | evolve     | vanish  | stabilize | decline |

### Answers

**Blank Answer**

- |   |            |
|---|------------|
| 1 | radically  |
| 2 | instantly  |
| 3 | label      |
| 4 | resurgence |
| 5 | evolve     |

### Passage 24: Critical Thinking in the Age of AI

As Artificial Intelligence becomes more integrated into our daily lives, the ability to think critically is more (1) \_\_\_\_\_ than ever. AI can generate vast amounts of content, but it cannot always distinguish between fact and (2) \_\_\_\_\_. Therefore, users must be able to evaluate the information they receive and identify potential (3) \_\_\_\_\_. This involves questioning the source of the data and looking for logical inconsistencies. Educators are now placing a stronger emphasis on these skills to prepare students for a (4) \_\_\_\_\_ digital world. Ultimately, critical thinking is the best (5) \_\_\_\_\_ against misinformation.

### Options

**Blank Option A Option B Option C Option D**

- |     |           |          |           |         |
|-----|-----------|----------|-----------|---------|
| (1) | essential | optional | secondary | rare    |
| (2) | fiction   | truth    | reality   | history |
| (3) | biases    | gifts    | stories   | secrets |
| (4) | complex   | simple   | small     | quiet   |
| (5) | defense   | attack   | excuse    | ignore  |

### Answers

## PREPWITHDALJEET

### Blank Answer

- 1     essential
- 2     fiction
- 3     biases
- 4     complex
- 5     defense

### Passage 25: The Benefits of Lifelong Learning

The concept of lifelong learning suggests that education should not end with a formal degree but should (1) \_\_\_\_\_ throughout a person's life. In a rapidly changing job market, the ability to learn new skills is a key (2) \_\_\_\_\_ for career longevity. Beyond professional benefits, continuous learning helps to keep the mind (3) \_\_\_\_\_ and can improve mental well-being. Whether it is learning a new language, a musical instrument, or a technical skill, the process fosters a sense of (4) \_\_\_\_\_. Many online platforms now make it easier than ever to access high-quality courses from home. Ultimately, the most successful individuals are those who remain (5) \_\_\_\_\_ about the world.

### Options

Blank	Option A	Option B	Option C	Option D
(1)	continue	vanish	stabilize	decline
(2)	advantage	burden	risk	secret
(3)	sharp	dull	tired	bored
(4)	achievement	failure	boredom	silence
(5)	curious	indifferent	bored	tired

### Answers

#### Blank Answer

- 1     continue
- 2     advantage
- 3     sharp
- 4     achievement
- 5     curious

## Re-order Paragraph

Box ID	Text Segment
A	This digital shift has forced companies to respond almost instantly to maintain their reputation.
B	Before the internet, shoppers typically voiced their dissatisfaction through private letters or phone calls to a company's service department.
C	Consequently, a single negative comment can now reach thousands of potential buyers in a matter of seconds.
D	However, the rise of social media has transformed these private complaints into very public discussions.
E	Understanding how to manage this public discourse has become a vital skill for modern marketing teams.

Correct Sequence	Rationale
1. B	<b>Topic Sentence:</b> Introduces the subject (customer feedback) and the historical context (before the internet).
2. D	<b>Contrast:</b> Uses the transition "However" to contrast the "private" past with the "public" social media present.
3. C	<b>Result:</b> Uses "Consequently" to explain the immediate impact of social media mentioned in sentence D.

## PREPWITHDALJEET

Correct Sequence	Rationale
4. A	<b>Effect on Business:</b> Refers back to "This digital shift" (the social media change) and how companies must now react.
5. E	<b>Conclusion:</b> Summarizes the final takeaway—that managing this is now a "vital skill" for teams.

### Passage 2: Remote Work and Urban Dynamics

Box ID	Text Segment
A	Consequently, city planners are now exploring ways to repurpose these vacant commercial spaces into affordable housing.
B	This shift has led to a noticeable decline in the number of employees commuting to central business districts daily.
C	The rise of flexible working arrangements has fundamentally altered the traditional landscape of urban employment.
D	As a result, local businesses that relied on office workers, such as cafes and gyms, have seen a significant drop in revenue.

**Correct Order:** C → B → D → A

- Logical Explanation:**

- (C) is the **Topic Sentence**; it introduces the broad concept of "flexible working" without needing prior context.
- (B) links via "**This shift**," which refers directly back to the "flexible working arrangements" mentioned in C.

## PREPWITHDALJEET

3. **(D)** uses "**As a result**" to explain the economic consequence of the lack of commuters described in B.
4. **(A)** uses "**Consequently**" to provide the final solution (repurposing space) to the problems raised in B and D.

### Passage 3: The Lifecycle of a Startup

Box ID	Text Segment
A	Once the initial funding is secured, the entrepreneurs focus on developing a prototype to test the market.
B	After analyzing this feedback, the team refines the product for a full-scale commercial launch.
C	Most startups begin with a unique idea aimed at solving a specific problem in a niche market.
D	This prototype is then released to a small group of beta users to gather essential performance data.

**Correct Order: C → A → D → B**

- **Logical Explanation:**

1. **(C)** is the **Topic Sentence**; it defines the origin of a startup (the idea).
2. **(A)** follows the "idea" phase with the next logical chronological step: funding and building.
3. **(D)** links via "**This prototype**," referring back to the "prototype" mentioned in sentence A.
4. **(B)** uses the time marker "**After analyzing this feedback**" to refer to the data gathered in D, concluding the process.

**Passage 4: Artificial Intelligence in Recruitment**

Box ID	Text Segment
A	Despite these advantages, some experts warn that algorithms can inadvertently inherit the biases of their human programmers.
B	Modern corporations are increasingly utilizing AI software to filter through thousands of job applications.
C	Therefore, a human oversight element remains necessary to ensure fairness and diversity in the hiring process.
D	These automated systems can scan resumes for specific keywords and experience levels in a fraction of a second.

**Correct Order: B → D → A → C**

- Logical Explanation:**

- (B) is the **Topic Sentence**; it introduces the general use of AI in hiring.
- (D) links via "These automated systems," which describes the "AI software" mentioned in B.
- (A) provides the **Contrast** ("Despite these advantages") to pivot from the speed in D to the risk of bias.
- (C) uses "Therefore" to offer the final logical conclusion/solution to the bias mentioned in A.

**Passage 5: Sustainable Farming Practices**

## PREPWITHDALJEET

Box ID	Text Segment
A	These natural methods help maintain soil health and reduce the need for expensive chemical fertilizers.
B	To achieve this, they often implement traditional techniques like crop rotation and organic composting.
C	However, the transition to such practices requires significant initial investment and education for the farmers.
D	Many agricultural communities are now shifting toward sustainable farming to protect the environment.

**Correct Order: D → B → A → C**

- Logical Explanation:**

- (D) is the **Topic Sentence**; it introduces the community and the goal of sustainability.
- (B) uses the pronoun "**they**" to refer to the "communities" in D and explains "how" they achieve the goal.
- (A) links via "**These natural methods**," referring back to the "rotation and composting" described in B.
- (C) uses "**However**" to introduce a final limitation or challenge to the methods praised in A and B.

**Answer Key: Export to Sheet Style**

Passage No.	Title	Step 1	Step 2	Step 3	Step 4
2	Remote Work	C	B	D	A

## PREPWITHDALJEET

Passage No.	Title	Step 1	Step 2	Step 3	Step 4
3	Startup Lifecycle	C	A	D	B
4	AI Recruitment	B	D	A	C
5	Sustainable Farming	D	B	A	C

### Passage 6: The Rise of Micro-Learning

Box ID	Text Segment
A	These short bursts of content, often lasting just a few minutes, are designed to fit into a busy person's daily routine.
B	Consequently, many corporations are now replacing long-form training manuals with series of interactive, bite-sized videos.
C	In the modern fast-paced world, traditional long-form education is being challenged by a new trend called micro-learning.
D	This shift allows employees to gain specific skills without having to step away from their primary duties for extended periods.
E	By focusing on one small objective at a time, learners can retain information more effectively than through marathon study sessions.

**Correct Order: C → A → E → B → D**

- Logical Explanation:**

- (C) is the **Topic Sentence** introducing the concept of micro-learning.
- (A) uses "**These short bursts**" to define the micro-learning mentioned in C.
- (E) explains the **benefit** of the method described in A (focusing on one objective).

## PREPWITHDALJEET

4. **(B)** shows the **corporate result** ("Consequently") of these benefits.
5. **(D)** uses "**This shift**" to conclude why corporations (from B) prefer this model.

### Passage 7: Urban Heat Islands

Box ID	Text Segment
A	This phenomenon, known as the Urban Heat Island effect, occurs because building materials like concrete absorb and retain solar energy.
B	As a result, temperatures in metropolitan centers can be significantly higher than in surrounding rural areas.
C	To mitigate this, city planners are increasingly mandating the installation of green roofs and reflective pavements.
D	Recent meteorological studies have shown that large cities generate and trap a disproportionate amount of heat.
E	Such cooling strategies not only improve resident comfort but also reduce the energy demand for air conditioning.

**Correct Order: D → A → B → C → E**

- **Logical Explanation:**

1. **(D)** is the **Topic Sentence** presenting the observation that cities trap heat.
2. **(A)** uses "**This phenomenon**" to label the observation in D and explain its cause.
3. **(B)** gives the **Result** ("As a result") of the process explained in A.
4. **(C)** introduces the **Solution** ("To mitigate this") to the temperature problem.
5. **(E)** refers to "**Such cooling strategies**" (the roofs/pavements in C) and lists their extra benefits.

**Passage 8: The Ethics of Artificial Intelligence**

Box ID	Text Segment
A	However, the use of these systems has raised urgent questions regarding data privacy and algorithmic bias.
B	Organizations are now developing ethical frameworks to ensure that AI serves the public good without compromising rights.
C	Artificial Intelligence is rapidly becoming the backbone of decision-making in sectors like finance and healthcare.
D	If these frameworks are not strictly enforced, the potential for social harm could outweigh the technological benefits.
E	These industries rely on AI's ability to process massive datasets much faster than any human team could manage.

**Correct Order: C → E → A → B → D**

- Logical Explanation:**

1. (C) is the **Topic Sentence** introducing AI's role in specific sectors.
2. (E) uses "**These industries**" to refer back to "finance and healthcare" mentioned in C.
3. (A) provides the **Contrast** ("However") highlighting the risks of the systems in E.
4. (B) presents the **Response** of organizations to the risks mentioned in A.
5. (D) uses a **Conditional link** ("If these frameworks...") to refer to the frameworks in B and conclude the warning.

### Passage 9: The Restoration of Historic Landmarks

Box ID	Text Segment
A	Specialists must use materials that match the original structure to avoid damaging the site's historical integrity.
B	Preserving ancient monuments requires a delicate balance between modern engineering and traditional craftsmanship.
C	Despite these high costs, the cultural value of protecting such heritage sites is considered immeasurable by global authorities.
D	This meticulous process often takes several years and requires substantial financial investment from the government.
E	For example, restorers often spend months sourcing specific types of limestone used by architects centuries ago.

**Correct Order:** B → A → E → D → C

- Logical Explanation:**

- (B) is the **Topic Sentence** about the balance required in preservation.
- (A) expands on the "craftsmanship" in B by discussing material matching.
- (E) provides an **Example** ("For example") of the specific material matching mentioned in A.
- (D) uses "**This meticulous process**" to summarize the efforts in A and E and introduces the cost/time factor.
- (C) uses the contrast "**Despite these high costs**" to conclude with the cultural value of the work.

**Passage 10: Consumer Behavior and E-Commerce**

Box ID	Text Segment
A	This allows them to compare prices across dozens of retailers without ever leaving their homes.
B	In contrast, previous generations had to visit multiple physical stores to find the best deal on a product.
C	Modern shoppers have more information at their fingertips than at any other time in history.
D	Therefore, businesses must now compete on more than just price, focusing heavily on shipping speed and customer reviews.
E	Much of this information comes from mobile apps and specialized price-comparison websites.

**Correct Order: C → E → A → B → D**

- Logical Explanation:**

1. (C) is the **Topic Sentence** stating that modern shoppers have a lot of information.
2. (E) uses "**Much of this information**" to tell the reader where the information in C comes from.
3. (A) uses "**This**" (the access via apps in E) to explain the specific convenience of comparing prices.
4. (B) uses "**In contrast**" to compare the ease in A with the difficulty faced by "previous generations."
5. (D) uses "**Therefore**" to state the final business implication of this empowered consumer.

## PREPWITHDALJEET

Here are the next 5 practice tasks (11–15) for **PTE Core Reorder Paragraphs**. These focus on more complex topics with 5-sentence structures to help you refine your skills in identifying subtle logical links.

### Passage 11: The History of the Printing Press

Box ID	Text Segment
A	This invention, developed by Johannes Gutenberg, allowed for the mass production of books for the first time.
B	Before the 15th century, manuscripts had to be painstakingly copied by hand by dedicated scribes.
C	Consequently, the cost of books dropped significantly, making knowledge accessible to the common person.
D	This shift in literacy levels eventually fueled major social and intellectual movements across Europe.
E	However, everything changed with the introduction of the movable type printing press.

**Correct Order: B → E → A → C → D**

- Logical Explanation:**

- (B) provides the **Historical Background** (copying by hand).
- (E) uses the contrast "**However**" to introduce a turning point (the printing press).
- (A) uses "**This invention**" to refer back to the printing press in E and identifies the inventor.
- (C) provides the **Result** ("Consequently") regarding the cost and accessibility.

5. **(D)** uses "**This shift**" to refer to the accessibility in C and concludes with the social impact.

### Passage 12: The Greenhouse Effect

Box ID	Text Segment
A	While this natural process is necessary for life, human activities have significantly intensified it.
B	The Earth's atmosphere acts like the glass walls of a greenhouse, trapping heat from the sun.
C	As these gas levels rise, the planet's average temperature increases, leading to global warming.
D	These activities, such as burning fossil fuels, release massive amounts of carbon dioxide into the air.
E	This trapped warmth keeps our planet at a temperature suitable for humans and animals to survive.

**Correct Order: B → E → A → D → C**

- Logical Explanation:**

- (B)** is the **Topic Sentence** explaining the basic metaphor of the greenhouse.
- (E)** uses "**This trapped warmth**" to link back to the "trapping heat" mentioned in B.
- (A)** uses "**this natural process**" to refer to the warmth in E, but introduces a contrast about human activity.
- (D)** uses "**These activities**" to provide specific examples of the "human activities" mentioned in A.

5. (C) uses a result link ("As these gas levels rise") referring to the CO2 in D to conclude with global warming.

### Passage 13: Corporate Social Responsibility (CSR)

Box ID	Text Segment
A	Such initiatives might include reducing carbon emissions or supporting local education programs.
B	Historically, the primary goal of any corporation was simply to maximize profits for its shareholders.
C	Therefore, modern companies are now expected to integrate social and environmental concerns into their operations.
D	This evolving set of expectations is commonly referred to as Corporate Social Responsibility.
E	However, public perception has shifted, and consumers now demand more ethical behavior from big brands.

**Correct Order: B → E → C → D → A**

- Logical Explanation:**

- (B) provides the **Initial Context** (maximizing profits).
- (E) uses "**However**" to show how public perception changed from the historical view in B.
- (C) uses "**Therefore**" to show the company's response to the consumer demand in E.
- (D) uses "**This evolving set of expectations**" to label the expectations mentioned in C as CSR.
- (A) uses "**Such initiatives**" to provide examples of the CSR activities defined in D.

### Passage 14: The Development of Antibiotics

Box ID	Text Segment
A	This accidental discovery by Alexander Fleming revolutionized the way doctors treated infections.
B	However, the widespread over-prescription of these drugs has led to the rise of antibiotic-resistant bacteria.
C	Before the 1920s, even a minor bacterial infection could prove fatal to a healthy adult.
D	To address this threat, researchers are now searching for new ways to combat "superbugs" in hospitals.
E	The situation changed in 1928 when a mold called Penicillium was found to kill harmful bacteria.

**Correct Order:** C → E → A → B → D

- Logical Explanation:**

- (C) is the **Topic Sentence**; it sets the stage by describing the era before antibiotics.
- (E) provides the **Event**; it mentions the specific year (1928) and the mold.
- (A) uses "**This accidental discovery**" to refer to the mold found in E.
- (B) uses the contrast "**However**" to introduce the modern problem caused by "these drugs" (antibiotics).
- (D) uses "**this threat**" to refer to the resistant bacteria in B and mentions the current research solution.

**Passage 15: The Gig Economy**

Box ID	Text Segment
A	Instead of permanent contracts, these individuals take on short-term tasks or "gigs" via digital platforms.
B	While this offers flexibility, it also means workers often lack access to traditional benefits like health insurance.
C	The traditional 9-to-5 office job is no longer the only path to a stable career.
D	Consequently, governments are under pressure to update labor laws to protect this new class of employees.
E	A growing number of people are now participating in what is known as the gig economy.

**Correct Order: C → E → A → B → D**

- Logical Explanation:**

1. (C) is the **Opening Sentence**; it challenges the old model of employment.
2. (E) introduces the **Alternative**; it names the "gig economy" as the new trend.
3. (A) uses "**these individuals**" to refer to the people in E and explains how they work.
4. (B) provides a **Balanced View**; it acknowledges the "flexibility" in A but introduces the lack of benefits.
5. (D) provides the **Conclusion** ("Consequently"); it shows the legal pressure resulting from the lack of benefits in B.

**Passage 16: The Circular Economy**

Box ID	Text Segment
A	This traditional "take-make-dispose" pattern is now being replaced by a more sustainable concept.
B	In a circular economy, products are designed for durability, reuse, and easy recycling.
C	For decades, the global manufacturing sector followed a linear model of production and consumption.
D	Consequently, waste is minimized as materials are kept within the production loop for as long as possible.
E	By shifting to this approach, companies can reduce their environmental impact while lowering raw material costs.

**Correct Order: C → A → B → D → E**

- Logical Explanation:**

1. (C) provides the **Historical Background** of the linear model.
2. (A) uses "**This traditional pattern**" to refer to the model in C and introduces a replacement.
3. (B) defines the new replacement mentioned in A: the **Circular Economy**.
4. (D) provides the **Result** ("Consequently") of the design process described in B.
5. (E) concludes by explaining the dual **Benefits** (environmental and financial) of the shift.

**Passage 17: The Hydrological Cycle**

<b>Box ID</b>	<b>Text Segment</b>
<b>A</b>	Once in the atmosphere, this vapor cools and condenses to form clouds through a process known as condensation.
<b>B</b>	Eventually, the water returns to the Earth's surface as precipitation in the form of rain or snow.
<b>C</b>	The water cycle is a continuous process that circulates water between the Earth's oceans, atmosphere, and land.
<b>D</b>	This movement begins when solar energy causes water from the oceans to evaporate into the air.
<b>E</b>	From the land, the water flows back into rivers and oceans, completing the cycle and allowing it to begin again.

**Correct Order: C → D → A → B → E**

- Logical Explanation:**

1. **(C)** is the **Topic Sentence** defining the entire cycle.
2. **(D)** identifies the **Start Point** ("This movement begins...") linked to solar energy and evaporation.
3. **(A)** follows the evaporation with the next stage: **Condensation** in the atmosphere.
4. **(B)** describes the **Return Phase** (precipitation) following the cloud formation in A.
5. **(E)** explains the **Final Link** (flow back to oceans) that allows the cycle to restart.

**Passage 18: Urbanization and Wildlife**

Box ID	Text Segment
A	However, some adaptable species, such as foxes and pigeons, have managed to thrive in these new urban settings.
B	As cities expand into natural territories, local wildlife often faces a loss of habitat and food sources.
C	This ability to coexist with humans is known as synanthropy, and it is becoming more common globally.
D	Unfortunately, most animals are unable to adjust and are forced to migrate or face local extinction.
E	Understanding these interactions is vital for city planners who want to create biodiversity-friendly urban zones.

**Correct Order: B → D → A → C → E**

- Logical Explanation:**

- (B) is the **Topic Sentence** setting the scene of urban expansion.
- (D) provides the **Primary Negative Outcome** for "most animals" mentioned in the context of B.
- (A) provides the **Contrast** ("However") focusing on the few "adaptable species" that survive.
- (C) uses "**This ability**" to label the survival behavior of the species mentioned in A.
- (E) concludes by linking the study of these interactions to the **Professional Responsibility** of city planners.

**Passage 19: The Rise of E-Books**

Box ID	Text Segment
A	These devices allow readers to carry thousands of titles in a single, lightweight gadget.
B	Despite the convenience of digital files, many enthusiasts still prefer the tactile feel of a physical book.
C	The publishing industry has undergone a massive transformation with the advent of digital reading technology.
D	This preference has led to a surprising resurgence in independent bookstores and vinyl-like book collecting.
E	Central to this change was the development of e-readers equipped with electronic ink screens.

**Correct Order: C → E → A → B → D**

- Logical Explanation:**

- (C) is the **Topic Sentence** introducing the transformation of the industry.
- (E) identifies the **Specific Technology** ("Central to this change") responsible for the transformation.
- (A) uses "**These devices**" to describe the features of the e-readers mentioned in E.
- (B) introduces a **Counter-Trend** ("Despite the convenience") regarding physical books.
- (D) uses "**This preference**" to link back to the enthusiasts in B and describe the market result.

**Passage 20: Photosynthesis**

Box ID	Text Segment
A	During this process, plants use chlorophyll to capture light energy from the sun.
B	This energy is then used to convert water and carbon dioxide into glucose, which serves as food for the plant.
C	Photosynthesis is the fundamental biological process by which green plants produce their own energy.
D	As a byproduct of this chemical reaction, oxygen is released back into the atmosphere.
E	Without this steady release of oxygen, most life forms on Earth would be unable to survive.

**Correct Order: C → A → B → D → E**

- Logical Explanation:**

- (C) is the **Topic Sentence** defining photosynthesis.
- (A) uses "**this process**" to explain the first step involving chlorophyll and sunlight.
- (B) uses "**This energy**" to refer to the "light energy" captured in A and explains the conversion.
- (D) identifies the **Chemical Result** (oxygen) of the conversion process described in B.
- (E) concludes by explaining the **Global Importance** of the oxygen mentioned in D.

**Passage 21: The Evolution of Skyscrapers**

Box ID	Text Segment
A	This architectural shift was made possible by the invention of the safety elevator and the use of steel frames.
B	Before the late 19th century, buildings were rarely more than six stories high due to the weight of masonry walls.
C	Consequently, cities began to expand vertically, leading to the iconic skylines we see in places like New York.
D	Modern skyscrapers now incorporate sustainable technologies to reduce their massive energy consumption.
E	However, the demand for more floor space in crowded urban centers pushed architects to build upward.

**Correct Order: B → E → A → C → D**

- Logical Explanation:**

1. **(B)** provides the **Initial Constraint** (buildings were short due to weight).
2. **(E)** introduces the **Motivation** ("However, the demand...") for changing the old model.
3. **(A)** explains the **Technical Solution** ("This architectural shift") using elevators and steel.
4. **(C)** describes the **Result** ("Consequently") of being able to build upward.
5. **(D)** provides a **Modern Update** regarding sustainability in today's tall buildings.

**Passage 22: The Process of Glaciation**

Box ID	Text Segment
A	Over centuries, the sheer weight of these layers compresses the bottom snow into dense ice.
B	This massive body of ice, known as a glacier, then begins to flow slowly downhill under its own gravity.
C	As it moves, the glacier carves out deep U-shaped valleys and reshapes the entire landscape.
D	Glaciation begins when snow remains in a single location long enough to transform into ice.
E	Every year, new layers of snow bury and compress the previous layers without melting.

**Correct Order: D → E → A → B → C**

- Logical Explanation:**

1. **(D)** is the **Topic Sentence** defining the start of the process.
2. **(E)** describes the **Initial Action** (layers of snow accumulating every year).
3. **(A)** explains the **Transformation** ("the weight of these layers") into dense ice.
4. **(B)** labels the result as a "**glacier**" and describes its movement.
5. **(C)** concludes with the **Environmental Impact** ("As it moves...") of the glacier's travel.

**Passage 23: The Concept of Big Data**

Box ID	Text Segment
A	These datasets are so large and complex that traditional software is unable to process them effectively.
B	In the digital age, every online interaction generates a massive trail of information.
C	Therefore, companies must use advanced algorithms and cloud computing to extract valuable insights.
D	This collective volume of information is commonly referred to by tech experts as Big Data.
E	Once analyzed, these insights can be used to predict consumer trends and improve business efficiency.

**Correct Order: B → D → A → C → E**

- Logical Explanation:**

1. **(B)** is the **Topic Sentence** introducing the generation of online info.
2. **(D)** uses "**This collective volume**" to name the info as "Big Data."
3. **(A)** refers back to "**These datasets**" and explains the technical difficulty they pose.
4. **(C)** provides the **Solution** ("Therefore") using algorithms and cloud computing.
5. **(E)** explains the **Final Benefit** ("Once analyzed") of the entire process.

**Passage 24: Deep Sea Exploration**

<b>Box ID</b>	<b>Text Segment</b>
<b>A</b>	To withstand this environment, scientists utilize Remotely Operated Vehicles (ROVs) equipped with titanium hulls.
<b>B</b>	These machines allow researchers to capture footage and collect samples from the ocean floor.
<b>C</b>	The deep ocean remains one of the most mysterious and least explored regions on our planet.
<b>D</b>	This lack of exploration is primarily due to the extreme pressure and freezing temperatures found at great depths.
<b>E</b>	Without such specialized equipment, the crushing weight of the water would destroy any standard vessel.

**Correct Order: C → D → A → B → E**

- Logical Explanation:**

1. **(C)** is the **Topic Sentence** about the mystery of the deep ocean.
2. **(D)** explains the **Reason** ("This lack of exploration") for the mystery (pressure/cold).
3. **(A)** introduces the **Technological Solution** (ROVs) to handle the pressure.
4. **(B)** describes the **Function** of "These machines" in the field.
5. **(E)** provides a **Concluding Warning** regarding the necessity of "such specialized equipment."

**Passage 25: The History of Vaccination**

Box ID	Text Segment
A	He observed that milkmaids who had caught cowpox were seemingly immune to the more deadly smallpox.
B	This discovery led to the development of the world's first vaccine in 1796.
C	For centuries, smallpox was one of the most feared diseases, killing millions of people globally.
D	To test his theory, Jenner inoculated a young boy with matter from a cowpox blister.
E	The situation began to change when an English physician named Edward Jenner noticed a curious pattern.

**Correct Order: C → E → A → D → B**

- Logical Explanation:**

1. (C) provides the **Historical Background** of the disease.
2. (E) introduces the **Key Figure** (Edward Jenner) and a turning point.
3. (A) describes what Jenner "**observed**" regarding milkmaids and cowpox.
4. (D) explains the **Action taken** ("To test his theory") based on the observation in A.
5. (B) concludes with the **Result** ("This discovery") and the date of the first vaccine.

## PREPWITHDALJEET

### Reading: Fill in the Blanks

#### 1. Renewable Energy Investment

The global transition toward sustainable power sources has seen an unprecedented **(1)** \_\_\_\_\_ in renewable energy investment. Experts suggest that for the world to reach its net-zero goals, there must be a significant **(2)** \_\_\_\_\_ of existing electrical grids to handle the fluctuating nature of solar and wind power. Financial institutions are playing a major role by providing the necessary **(3)** \_\_\_\_\_ for large-scale infrastructure projects. Furthermore, the **(4)** \_\_\_\_\_ of battery technology is essential to ensure a reliable energy supply during periods of low natural resource availability.

#### Options (Horizontal Table – 6 options)

Option A	Option B	Option C	Option D	Option E	Option F
development	expansion	capital	surge	reduction	stability

#### Correct Answers

Blank No.	Correct Answer
1	surge
2	expansion
3	capital
4	development

#### Logical Explanation for this Activity:

- **Blank 1 (surge):** In the context of "unprecedented," a "surge" (a sudden powerful forward or upward movement) fits the growth of investment.
- **Blank 2 (expansion):** To "handle" more power, grids must grow in size or reach, making "expansion" the most logical fit.
- **Blank 3 (capital):** In a financial context, institutions provide "capital" (money/wealth) for projects.

## PREPWITHDALJEET

- **Blank 4 (development):** "Development" refers to the process of improving or creating new technology, such as batteries.

### 2. The Shift in Consumer Behavior

The rise of e-commerce has fundamentally (1) \_\_\_\_\_ the way individuals approach retail. Today's consumers are more informed than ever, often conducting extensive research online before making a final (2) \_\_\_\_\_. This access to information has forced businesses to be more transparent about their pricing and sourcing. Furthermore, the convenience of home delivery has led to a significant (3) \_\_\_\_\_ in foot traffic for traditional brick-and-mortar stores. As a result, retailers must now focus on creating unique in-store experiences to (4) \_\_\_\_\_ customers back to physical locations.

#### Options (Horizontal Table – 6 options)

Option A	Option B	Option C	Option D	Option E	Option F
purchase	transformed	decline	attract	increase	ignored

#### Correct Answers

Blank No.	Correct Answer
1	transformed
2	purchase
3	decline
4	attract

#### Logical Explanation for this Activity:

- **Blank 1 (transformed):** The sentence describes a fundamental change in the retail landscape; "transformed" is the best fit for a complete change in form or character.
- **Blank 2 (purchase):** In a retail context, "research" is typically done before a "purchase" (the act of buying something).
- **Blank 3 (decline):** If home delivery is more popular, physical store visits (foot traffic) will experience a "decline" (a decrease).
- **Blank 4 (attract):** To bring customers back, stores need to "attract" them (draw them in by offering something appealing).

## PREPWITHDALJEET

### 3. Urban Biodiversity

As cities continue to grow, the importance of maintaining green spaces becomes increasingly (1) \_\_\_\_\_. Urban parks and gardens provide essential habitats for various species and help to regulate local temperatures. However, the (2) \_\_\_\_\_ of concrete and asphalt in metropolitan areas often leads to the "heat island" effect. To combat this, architects are now incorporating vertical gardens into building designs. These living walls not only improve air quality but also provide a (3) \_\_\_\_\_ for birds and insects. Integrating nature into urban planning is a vital (4) \_\_\_\_\_ for creating more livable and sustainable cities.

#### Options (Horizontal Table – 6 options)

Option A	Option B	Option C	Option D	Option E	Option F
refuge	prevalent	strategy	evident	abundance	obstacle

#### Correct Answers

Blank No.	Correct Answer
1	evident
2	abundance
3	refuge
4	strategy

### 4. The Evolution of Remote Work

The global workforce has experienced a dramatic (1) \_\_\_\_\_ toward remote operations over the last few years. While technology has enabled employees to remain productive from home, the lack of face-to-face interaction has raised concerns about team (2) \_\_\_\_\_. Many organizations are now adopting a hybrid model, which offers a balance between flexibility and office-based collaboration. This approach requires managers to develop new (3) \_\_\_\_\_ for monitoring performance and maintaining company culture. Ultimately, the success of remote work depends on the (4) \_\_\_\_\_ of digital tools and clear communication.

#### Options (Horizontal Table – 6 options)

## PREPWITHDALJEET

Option A	Option B	Option C	Option D	Option E	Option F
cohesion	methods	shift	reliability	conflict	decrease

### Correct Answers

Blank No.	Correct Answer
1	shift
2	cohesion
3	methods
4	reliability

### 5. Financial Literacy in the Digital Age

In today's complex economy, possessing a high level of financial literacy is more **(1)** \_\_\_\_\_ than ever before. With the rise of digital banking and investment apps, individuals must be able to navigate a wide range of financial **(2)** \_\_\_\_\_. Understanding concepts such as interest rates, inflation, and market volatility is essential for making informed decisions. Educational programs that focus on money management can help people avoid debt and build long-term **(3)** \_\_\_\_\_. By improving their financial knowledge, consumers are better equipped to **(4)** \_\_\_\_\_ their economic future in an unpredictable world.

### Options (Horizontal Table – 6 options)

Option A	Option B	Option C	Option D	Option E	Option F
products	wealth	secure	critical	ignore	risks

### Correct Answers

## PREPWITHDALJEET

Blank No.	Correct Answer
1	critical
2	products
3	wealth
4	secure

### 6. The Silk Road Trade

The Silk Road was not a single thoroughfare but rather a vast **(1)** \_\_\_\_\_ of trade routes that connected the East and West.<sup>1</sup> For centuries, it facilitated the exchange of luxury goods, such as silk, spices, and precious metals.<sup>2</sup> However, the legacy of these routes extended far beyond commerce, as they played a **(2)** \_\_\_\_\_ role in the spread of ideas, religions, and technologies.<sup>3</sup> The movement of travelers and merchants led to a significant **(3)** \_\_\_\_\_ of cultures across diverse regions.<sup>4</sup> Despite the eventual decline of these overland paths due to the rise of maritime trade, their historical impact remains a testament to early global **(4)** \_\_\_\_\_.

#### Options (Horizontal Table – 6 options)

Option A	Option B	Option C	Option D	Option E	Option F
connectivity	network	fundamental	blending	isolation	minor

#### Correct Answers

Blank No.	Correct Answer
1	network
2	fundamental
3	blending

## PREPWITHDALJEET

Blank No.	Correct Answer
4	connectivity

### 7. The Industrial Revolution

The Industrial Revolution marked a major (1) \_\_\_\_\_ point in history, transitioning societies from agrarian economies to industrial powerhouses.<sup>5</sup> The invention of the steam engine and new manufacturing processes allowed for the (2) \_\_\_\_\_ production of goods, which previously had been crafted by hand.<sup>6</sup> While this era brought about significant economic growth and technological advancement, it also resulted in rapid urbanization and harsh working conditions.<sup>7</sup> Over time, these social challenges led to the (3) \_\_\_\_\_ of labor unions and new regulations to protect workers.<sup>8</sup> Ultimately, the changes sparked during this period laid the (4) \_\_\_\_\_ for the modern technological world.<sup>9</sup>

#### Options (Horizontal Table – 6 options)

Option A	Option B	Option C	Option D	Option E	Option F
foundation	mass	turning	emergence	decrease	stable

#### Correct Answers

Blank No.	Correct Answer
1	turning
2	mass
3	emergence
4	foundation

### 8. Ancient Egyptian Architecture

The architectural achievements of Ancient Egypt continue to fascinate historians due to their sheer (1) \_\_\_\_\_ and precision. The construction of the Great Pyramids required an immense amount of labor and a sophisticated understanding of mathematics.<sup>10</sup> These structures were primarily designed

## PREPWITHDALJEET

as tombs to ensure the (2) \_\_\_\_\_ of the pharaohs in the afterlife.<sup>11</sup> Beyond their religious significance, the monuments served as a powerful (3) \_\_\_\_\_ of the wealth and authority of the reigning dynasty. Despite thousands of years of exposure to the elements, many of these stone edifices remain remarkably (4) \_\_\_\_\_, providing invaluable insights into an ancient civilization.

### Options (Horizontal Table – 6 options)

Option A	Option B	Option C	Option D	Option E	Option F
symbol	scale	intact	preservation	fragile	ignore

### Correct Answers

Blank No.	Correct Answer
1	scale
2	preservation
3	symbol
4	intact

### 9. The Viking Age

The Viking Age, spanning from the late 8th to the 11th century, was a period of intense maritime (1) \_\_\_\_\_ and expansion originating from Scandinavia. While popular history often focuses on their raids, the Vikings were also highly skilled traders and explorers who reached as far as North America and the Middle East. Their unique ship designs allowed them to navigate both open seas and shallow rivers, giving them a distinct (2) \_\_\_\_\_ over other contemporary naval forces. Furthermore, their settlements in regions like Britain and Normandy led to a lasting cultural and linguistic (3) \_\_\_\_\_ with local populations. Ultimately, the Norse influence played a vital role in the (4) \_\_\_\_\_ of early medieval Europe.

### Options (Horizontal Table – 6 options)

## PREPWITHDALJEET

Option A	Option B	Option C	Option D	Option E	Option F
advantage	exploration	integration	development	isolation	decline

### Correct Answers

Blank No.	Correct Answer
1	exploration
2	advantage
3	integration
4	development

### 10. The Scientific Revolution

The Scientific Revolution of the 16th and 17th centuries marked a fundamental **(1)** \_\_\_\_\_ in how humanity perceived the natural world. Moving away from traditional religious and philosophical dogmas, scholars began to rely on empirical observation and mathematical **(2)** \_\_\_\_\_. This period saw the birth of modern physics and astronomy, led by figures such as Copernicus, Galileo, and Newton. The development of the scientific method provided a rigorous **(3)** \_\_\_\_\_ for testing hypotheses and validating new discoveries. These intellectual advancements not only transformed the academy but also provided the necessary technological **(4)** \_\_\_\_\_ for the subsequent Industrial Revolution.

### Options (Horizontal Table – 6 options)

Option A	Option B	Option C	Option D	Option E	Option F
framework	transformation	logic	foundation	obstacle	stable

### Correct Answers

## PREPWITHDALJEET

Blank No.	Correct Answer
1	transformation
2	logic
3	framework
4	foundation

### 11. The Magna Carta

Signed in 1215, the Magna Carta is widely regarded as one of the most **(1)** \_\_\_\_\_ documents in the history of democracy. Originally drafted to settle a political crisis between King John and a group of rebellious barons, it established the principle that everyone, including the king, was subject to the law. While many of its clauses dealt with specific medieval grievances, the document's focus on due process and individual rights had a **(2)** \_\_\_\_\_ impact on future legal systems. Over the centuries, it served as a vital **(3)** \_\_\_\_\_ for the development of constitutional governance in various nations. Today, its legacy continues to **(4)** \_\_\_\_\_ modern concepts of liberty and justice.

#### Options (Horizontal Table – 6 options)

Option A	Option B	Option C	Option D	Option E	Option F
influential	template	profound	inspire	minor	ignore

#### Correct Answers

Blank No.	Correct Answer
1	influential
2	profound
3	template

## PREPWITHDALJEET

Blank No.	Correct Answer
4	inspire

### 12. The Renaissance

The Renaissance was a period of intense cultural, artistic, and scientific **(1)** \_\_\_\_\_ that began in Italy during the 14th century. This era marked a move away from the rigid structures of the Middle Ages toward a new philosophy known as humanism. Scholars and artists sought to **(2)** \_\_\_\_\_ the classical knowledge of Ancient Greece and Rome, leading to a surge in creativity and innovation. The invention of the printing press further accelerated this movement by allowing new ideas to **(3)** \_\_\_\_\_ rapidly across the continent. Ultimately, the Renaissance transformed European society and paved the way for the **(4)** \_\_\_\_\_ of the modern world.

#### Options (Horizontal Table – 6 options)

Option A	Option B	Option C	Option D	Option E	Option F
revival	rediscover	circulate	emergence	decline	stable

#### Correct Answers

Blank No.	Correct Answer
1	revival
2	rediscover
3	circulate
4	emergence

### 13. The Fall of the Roman Empire

The decline of the Western Roman Empire was not a sudden event but rather a **(1)** \_\_\_\_\_ process that spanned several centuries. Historians point to a combination of internal instability, economic crises, and external pressures from Germanic tribes as primary causes. As the central authority in Rome weakened, the empire's vast borders became increasingly **(2)** \_\_\_\_\_ to invasion. This

## PREPWITHDALJEET

period of turmoil eventually led to the (3) \_\_\_\_\_ of Roman power in the west and the beginning of the Middle Ages. Despite its collapse, the Roman legacy in law, language, and architecture remained (4) \_\_\_\_\_ in the successor states that emerged.

### Options (Horizontal Table – 6 options)

Option A	Option B	Option C	Option D	Option E	Option F
gradual	vulnerable	fragmentation	evident	instant	protected

### Correct Answers

Blank No.	Correct Answer
1	gradual
2	vulnerable
3	fragmentation
4	evident

### 14. The French Revolution

The French Revolution was a watershed event in modern European history that (1) \_\_\_\_\_ the absolute monarchy and the feudal system. Fueled by Enlightenment ideals of equality and liberty, the uprising sought to restructure the nation's political and social (2) \_\_\_\_\_. While the initial phases of the revolution brought about significant reforms, the period was also marked by extreme violence and political (3) \_\_\_\_\_. Despite the rise of Napoleon Bonaparte and the eventual return of the monarchy, the revolutionary spirit remained a powerful force for change. Its principles continue to serve as a (4) \_\_\_\_\_ for democratic movements worldwide.

### Options (Horizontal Table – 6 options)

Option A	Option B	Option C	Option D	Option E	Option F
dismantled	framework	instability	cornerstone	supported	simple

**Correct Answers**

Blank No.	Correct Answer
1	dismantled
2	framework
3	instability
4	cornerstone

**15. The Age of Exploration**

During the 15th and 16th centuries, European explorers embarked on long-distance maritime voyages that forever **(1)** \_\_\_\_\_ the global map. Driven by a desire for new trade routes and the discovery of precious resources, nations like Spain and Portugal funded ambitious expeditions across the Atlantic and Indian Oceans. These journeys led to the first **(2)** \_\_\_\_\_ contact between distant civilizations, sparking an era of global exchange known as the Columbian Exchange. However, this period also brought about the colonization of indigenous lands and the **(3)** \_\_\_\_\_ of local populations. The consequences of this era were **(4)** \_\_\_\_\_, shaping the geopolitical landscape of the modern era.

**Options (Horizontal Table – 6 options)**

Option A	Option B	Option C	Option D	Option E	Option F
altered	sustained	displacement	far-reaching	minor	ignored

**Correct Answers**

Blank No.	Correct Answer
1	altered
2	sustained
3	displacement

## PREPWITHDALJEET

Blank No.	Correct Answer
4	far-reaching

### 16. The Importance of Sleep

Medical researchers have long emphasized that sleep is not merely a period of inactivity but a **(1)** \_\_\_\_\_ process for physical and mental restoration. During deep sleep, the body repairs tissues and strengthens the immune system, while the brain processes information from the day. A chronic lack of sleep can lead to a significant **(2)** \_\_\_\_\_ in cognitive function, affecting memory and decision-making. To improve sleep quality, experts recommend maintaining a consistent schedule and reducing **(3)** \_\_\_\_\_ to blue light from electronic devices before bed. Ultimately, prioritizing rest is a key **(4)** \_\_\_\_\_ of a healthy and productive lifestyle.

#### Options (Horizontal Table – 6 options)

Option A	Option B	Option C	Option D	Option E	Option F
exposure	component	vital	impairment	minor	luxury

#### Correct Answers

Blank No.	Correct Answer
1	vital
2	impairment
3	exposure
4	component

### 17. Consumer Psychology

Understanding consumer psychology is essential for brands looking to **(1)** \_\_\_\_\_ their market share in a competitive economy. Marketing specialists often use emotional triggers to create a sense of urgency or belonging among potential buyers. For instance, limited-time offers are a common **(2)** \_\_\_\_\_ used to encourage immediate action by tapping into the fear of missing out. Furthermore,

## PREPWITHDALJEET

brand loyalty is often built through consistent positive experiences, which foster a deep (3) \_\_\_\_\_ between the customer and the company. By analyzing these behavioral patterns, businesses can tailor their advertising to more effectively (4) \_\_\_\_\_ to their target audience.

### Options (Horizontal Table – 6 options)

Option A	Option B	Option C	Option D	Option E	Option F
appeal	connection	expand	tactic	ignore	stable

### Correct Answers

Blank No.	Correct Answer
1	expand
2	tactic
3	connection
4	appeal

### 18. The Impact of Plastic Pollution

The accumulation of plastic waste in the world's oceans has reached a (1) \_\_\_\_\_ level, posing a direct threat to marine ecosystems. Unlike organic materials, most plastics do not biodegrade; instead, they break down into microplastics that enter the food chain. This pollution has a devastating (2) \_\_\_\_\_ on wildlife, as animals often mistake plastic debris for food or become entangled in it. To address this crisis, many nations are implementing stricter (3) \_\_\_\_\_ on single-use plastics and promoting recycling initiatives. However, a global effort is required to innovate sustainable packaging alternatives and reduce the world's (4) \_\_\_\_\_ on non-recyclable materials.

### Options (Horizontal Table – 6 options)

Option A	Option B	Option C	Option D	Option E	Option F
critical	regulations	effect	reliance	benefit	optional

## PREPWITHDALJEET

### Correct Answers

Blank No.	Correct Answer
1	critical
2	effect
3	regulations
4	reliance

### 19. The Benefits of Lifelong Learning

In a rapidly evolving job market, the concept of lifelong learning has become a **(1)** \_\_\_\_\_ for professional success. As automation and AI change the nature of work, individuals must proactively seek to **(2)** \_\_\_\_\_ their skills to remain relevant. Online courses and professional workshops provide accessible platforms for people to acquire new knowledge at any stage of their career. Beyond career advancement, continuous education has been shown to improve mental **(3)** \_\_\_\_\_ and boost self-confidence. Embracing a mindset of constant growth allows workers to adapt to unforeseen economic **(4)** \_\_\_\_\_ and seize new opportunities.

### Options (Horizontal Table – 6 options)

Option A	Option B	Option C	Option D	Option E	Option F
update	agility	necessity	shifts	decline	static

### Correct Answers

Blank No.	Correct Answer
1	necessity
2	update
3	agility

## PREPWITHDALJEET

Blank No.	Correct Answer
4	shifts

### 20. The Rise of Smart Cities

The development of "smart cities" represents a major **(1)** \_\_\_\_\_ in urban management, utilizing data and technology to improve the quality of life for residents. By integrating sensors into public infrastructure, city officials can monitor traffic flow, energy usage, and air quality in real-time. This data-driven approach allows for more efficient **(2)** \_\_\_\_\_ of resources, such as adjusting street lighting based on pedestrian activity. While the benefits of increased efficiency are clear, the implementation of such systems also raises concerns regarding data **(3)** \_\_\_\_\_ and surveillance. Ultimately, the goal of smart city initiatives is to create urban environments that are more responsive, sustainable, and **(4)** \_\_\_\_\_ to the needs of the community.

#### Options (Horizontal Table – 6 options)

Option A	Option B	Option C	Option D	Option E	Option F
innovation	privacy	allocation	adapted	problem	traditional

#### Correct Answers

Blank No.	Correct Answer
1	innovation
2	allocation
3	privacy
4	adapted

### 21. The Role of Biodiversity

Biodiversity is the variety of all living things on Earth and how they fit together in a complex **(1)** \_\_\_\_\_ of life. This diversity provides humans with essential resources, including food, clean water, and medicines. However, habitat destruction and climate change are currently causing a rapid

## PREPWITHDALJEET

(2) \_\_\_\_\_ in the number of species worldwide. Scientists warn that losing even a single species can disrupt an entire ecosystem, leading to unforeseen consequences for the planet. To prevent further loss, international conservation efforts are focusing on the (3) \_\_\_\_\_ of endangered habitats. Protecting biodiversity is not just an environmental issue; it is a fundamental (4) \_\_\_\_\_ for human survival and global stability.

### Options (Horizontal Table – 6 options)

Option A	Option B	Option C	Option D	Option E	Option F
decline	requirement	protection	web	expansion	optional

### Correct Answers

Blank No.	Correct Answer
1	web
2	decline
3	protection
4	requirement

## 22. The Impact of Social Media on News

The way people consume news has undergone a significant (1) \_\_\_\_\_ due to the rise of social media platforms. In the past, citizens relied on traditional outlets like newspapers and television broadcasts for verified information. Today, news often breaks on social media in real-time, allowing for immediate global (2) \_\_\_\_\_. While this speed is beneficial, it also presents challenges regarding the accuracy and credibility of the content shared. The viral nature of these platforms can lead to the rapid spread of misinformation if users do not practice critical (3) \_\_\_\_\_. Consequently, digital literacy has become an essential skill for navigating the modern information (4) \_\_\_\_\_.

### Options (Horizontal Table – 6 options)

## PREPWITHDALJEET

Option A	Option B	Option C	Option D	Option E	Option F
analysis	landscape	transformation	awareness	stability	closure

### Correct Answers

Blank No.	Correct Answer
1	transformation
2	awareness
3	analysis
4	landscape

### 23. Desertification and Land Degradation

Desertification is a type of land degradation in which relatively dry regions become increasingly **(1)** \_\_\_\_\_, typically losing their bodies of water as well as vegetation and wildlife. It is caused by a variety of factors, such as climate change and human activities like overgrazing and deforestation. As the soil loses its nutrients, it becomes unable to **(2)** \_\_\_\_\_ plant life, which in turn leads to food insecurity for local populations. To combat this, many communities are implementing sustainable land management practices, such as **(3)** \_\_\_\_\_ and soil conservation. Restoring degraded land is a lengthy process, but it is **(4)** \_\_\_\_\_ for protecting the livelihoods of millions of people living in arid regions.

### Options (Horizontal Table – 6 options)

Option A	Option B	Option C	Option D	Option E	Option F
reforestation	crucial	support	arid	moist	minor

### Correct Answers

## PREPWITHDALJEET

Blank No.	Correct Answer
1	arid
2	support
3	reforestation
4	crucial

### 24. The Psychology of Motivation

Motivation is the internal process that initiates, guides, and maintains goal-oriented **(1)** \_\_\_\_\_. Psychologists often distinguish between intrinsic motivation, which comes from within, and extrinsic motivation, which is driven by external rewards. Understanding what drives people is a **(2)** \_\_\_\_\_ aspect of effective management and personal development. For example, setting clear, achievable goals can significantly **(3)** \_\_\_\_\_ a person's focus and persistence. Furthermore, providing positive feedback helps to reinforce desired habits and build self-efficacy. Ultimately, mastering the art of motivation allows individuals to overcome obstacles and reach their full **(4)** \_\_\_\_\_.

#### Options (Horizontal Table – 6 options)

Option A	Option B	Option C	Option D	Option E	Option F
behaviors	enhance	potential	core	decrease	static

#### Correct Answers

Blank No.	Correct Answer
1	behaviors
2	core
3	enhance

## PREPWITHDALJEET

Blank No.	Correct Answer
4	potential

### 25. Renewable Energy and the Power Grid

The transition to renewable energy sources, such as solar and wind, requires a fundamental **(1)** \_\_\_\_\_ of how national power grids operate. Traditional grids were designed for centralized power plants that provided a steady, predictable supply of electricity. In contrast, renewable energy is often **(2)** \_\_\_\_\_, meaning production fluctuates based on weather conditions. To ensure a stable supply, engineers are developing advanced energy storage systems and "smart grids" that can balance demand in real-time. The **(3)** \_\_\_\_\_ of these technologies is essential for reducing our reliance on fossil fuels. Despite the technical challenges, the shift toward clean energy is a necessary step for achieving long-term environmental **(4)** \_\_\_\_\_.

#### Options (Horizontal Table – 6 options)

Option A	Option B	Option C	Option D	Option E	Option F
intermittent	integration	sustainability	redesign	consistent	failure

#### Correct Answers

Blank No.	Correct Answer
1	redesign
2	intermittent
3	integration
4	sustainability

## LISTENING

### Summarize Spoken Text

#### 1. Agriculture and Urbanization

##### Full Script (150–200 words)

Urban development and agriculture are closely linked and constantly influence each other. As cities expand, they create a clear contrast between urban and rural spaces. Urban areas are centres of industry, services, and population growth, while rural areas are traditionally associated with farming and food production. The growth of cities often leads to changes in agricultural practices, including mechanisation, intensification, and a shift toward supplying urban markets. At the same time, urbanisation can reduce available farmland due to infrastructure development and housing demands. This creates pressure on agricultural systems to produce more food using fewer resources. Additionally, rural communities may become economically dependent on urban centres, leading to migration and changes in social structures. Understanding the relationship between agriculture and urbanisation is essential for sustainable development, as cities rely heavily on rural regions for food, water, and raw materials. Effective planning is required to balance urban growth with the protection of agricultural land and rural livelihoods.

##### Answer (30–40 words)

The talk explains how urbanisation and agriculture influence each other. City growth affects rural land use, farming practices, and food supply. Balancing urban development with sustainable agriculture is essential for long-term economic and environmental stability.

---

#### 2. Sound Receptors

##### Full Script (150–200 words)

Sound receptors in the human ear play a crucial role in hearing by converting sound waves into electrical signals that the brain can interpret. When sound enters the ear, it causes the eardrum to vibrate. These vibrations are transferred through tiny bones and into fluid within the inner ear. Inside this fluid are small, hair-like receptors that move in response to sound vibrations. This movement generates electrical signals that travel through auditory nerves to the brain. Although these receptors are delicate, they are remarkably efficient at translating physical motion into meaningful sound information. Damage to these receptors can result in hearing loss, which highlights their importance.

## PREPWITHDALJEET

Understanding how sound receptors function helps scientists develop better hearing aids and treatments for auditory disorders. This process demonstrates the complexity of human sensory systems and how physical energy is transformed into neural signals.

### **Answer (30–40 words)**

The speaker describes how sound receptors convert vibrations into electrical signals. Sound travels through the ear, moves fluid and receptors, and is transformed into nerve signals that allow the brain to interpret sound.

---

### **3. Water**

#### **Full Script (150–200 words)**

Water is a vital resource for both human health and the environment, and access to clean drinking water is a fundamental right. Laws and regulations exist to ensure water quality and protect the public from contamination. These laws define acceptable standards for drinking water and outline responsibilities for governments and suppliers. However, drinking water faces many threats, including pollution, industrial waste, agricultural chemicals, and aging infrastructure. Individuals may also be exposed to harmful substances through contaminated water sources. Addressing these challenges requires both legal action and personal responsibility. Governments must enforce regulations, invest in infrastructure, and monitor water quality. At the same time, individuals can reduce risks by conserving water, using filtration systems, and supporting environmental protection efforts. Understanding water laws empowers people to demand safe water and take steps to protect this essential resource.

### **Answer (30–40 words)**

The lecture discusses drinking water laws, quality standards, and threats to clean water. It highlights legal protections, environmental risks, and personal responsibility in ensuring safe and sustainable access to drinking water.

---

### **4. Clean and Safe Produce**

#### **Full Script (150–200 words)**

Washing fruits and vegetables thoroughly is essential for maintaining food safety and protecting health. Produce can carry dirt, pesticides, bacteria, and other contaminants from farms, transportation, and handling. Leafy vegetables such as spinach and lettuce are particularly vulnerable due to their layered leaves, which can trap harmful substances. Washing these foods multiple times helps remove

## PREPWITHDALJEET

surface contaminants and reduce health risks. Using clean running water is generally effective, and scrubbing firmer produce can further enhance cleanliness. This practice significantly lowers the chance of foodborne illnesses and promotes safer consumption. Developing good food hygiene habits is especially important for children, elderly individuals, and people with weakened immune systems. Clean produce supports overall well-being and helps prevent avoidable health problems.

### **Answer (30–40 words)**

The speaker emphasizes the importance of washing fruits and vegetables thoroughly. Proper cleaning removes dirt, pesticides, and contaminants, especially from leafy produce, reducing health risks and improving food safety.

---

## **5. Fish**

### **Full Script (150–200 words)**

Fish play a critical role in maintaining healthy marine ecosystems and supporting global biodiversity. They are key components of the marine food web, acting both as predators and prey. By feeding on smaller organisms, fish help regulate population levels and maintain ecological balance. At the same time, they provide essential nutrition for larger marine animals such as seabirds and marine mammals. Fish populations also contribute to human food security and economic activity worldwide. Overfishing, pollution, and climate change threaten fish stocks and disrupt marine ecosystems. Protecting fish populations is essential for preserving ocean health and sustaining marine life. Conservation efforts, responsible fishing practices, and environmental protection policies are necessary to ensure long-term ecosystem stability.

### **Answer (30–40 words)**

The talk explains the importance of fish in marine ecosystems. Fish maintain food webs, support biodiversity, and provide nutrition, making their conservation essential for ocean health and ecological balance.

---

## **6. Park Cleanup**

### **Full Script (150–200 words)**

The speaker thanks volunteers for participating in a park cleanup and acknowledges their time and effort. The cleanup is organised into three different tasks, each handled by a separate team. One group will collect litter scattered around the park, ensuring cleaner and safer public spaces. Other teams may focus on recycling and maintaining green areas. Clear leadership roles are assigned to coordinate tasks

## PREPWITHDALJEET

efficiently. Organising volunteers into teams improves productivity and ensures the work is completed effectively. Community involvement in environmental initiatives strengthens social responsibility and promotes environmental awareness. Clean public spaces benefit both residents and wildlife.

### **Answer (30–40 words)**

The speaker thanks volunteers and explains the park cleanup plan. Tasks are divided among teams to efficiently collect trash and maintain the park, encouraging community involvement and environmental responsibility.

---

## **7. Technological Nature**

### **Full Script (150–200 words)**

Technological nature refers to computer-generated images that simulate natural environments. These images may look realistic but do not represent actual landscapes. Research shows that viewing natural scenes, even artificial ones, can positively affect mental health by reducing stress and improving mood. Technological nature is increasingly used in healthcare, urban design, and virtual environments where access to real nature is limited. While it cannot fully replace real outdoor experiences, it offers psychological benefits and practical applications. Understanding how artificial nature influences wellbeing helps designers create healthier digital and physical environments.

### **Answer (30–40 words)**

The talk explains technological nature as computer-generated natural scenes. Viewing these images can improve mental health by reducing stress, showing that artificial nature can have positive psychological effects.

---

## **8. Globalization**

### **Full Script (150–200 words)**

Globalization describes the increasing interconnectedness of countries and cultures. Advances in communication technology allow people to share ideas, information, and cultural products instantly. The internet enables access to global content, making the world feel smaller and more connected. While physical distances remain the same, communication speeds continue to accelerate. Globalization influences economics, culture, and social interaction by promoting international exchange. However, it also raises concerns about cultural homogenization and inequality. Understanding globalization helps people adapt to a rapidly changing world and engage with diverse perspectives.

## PREPWITHDALJEET

### Answer (30–40 words)

The speaker describes globalization as global interconnectedness through technology. Instant communication enables cultural exchange worldwide, shrinking perceived distances and accelerating social, economic, and cultural interaction.

---

### 9. Climate

#### Full Script (150–200 words)

Climate and agriculture influence each other in complex ways. While climate affects crop growth, agricultural practices also impact climate. Large portions of land are used for crops and pasture, altering land surfaces and ecosystems. Activities such as deforestation and land conversion change carbon levels and local climates. Farming methods influence greenhouse gas emissions, soil quality, and water use. Understanding this two-way relationship is essential for sustainable agriculture and climate mitigation. Improved land management can reduce environmental damage and support climate resilience.

### Answer (30–40 words)

The lecture explains the two-way relationship between climate and agriculture. Farming affects land use and emissions, while climate impacts crops, highlighting the need for sustainable agricultural practices.

## Fill in the Blanks

### 1. Burial

So between 4,000 and 3,000 BC, the Mesopotamian Sumerian cultures do not show (1) \_\_\_\_\_ kind of burial practice. Then, around 3,000 BC, in the early Dynastic Period, these burials start to reappear. They reappear with a certain amount of (2) \_\_\_\_\_ consumption, indicating status and hierarchy. This forms the (3) \_\_\_\_\_ for the royal burials at Ur. The royal cemetery consists of (4) \_\_\_\_\_ a number of pits containing rich grave goods.

(Approx. 70 words)

---

**Answers Table****Blank No. Correct Answer**

- |   |             |
|---|-------------|
| 1 | any         |
| 2 | conspicuous |
| 3 | context     |
| 4 | quite       |

**2. Malaria**

Malaria is a very complex disease with a complicated life cycle. This means that if you are going to **(1)** \_\_\_\_\_ it, you must be able to target parasites in both humans and mosquitoes. You also need to control the mosquito **(2)** \_\_\_\_\_ itself. Achieving this requires a **(3)** \_\_\_\_\_ and coordinated approach, involving medicine, public health strategies, and environmental management. Without such **(4)** \_\_\_\_\_, eliminating malaria remains extremely difficult.

**Answers****Blank Answer**

- |   |               |
|---|---------------|
| 1 | control       |
| 2 | population    |
| 3 | comprehensive |
| 4 | coordination  |
- 

**3. Belief**

Belief is the human capacity to imagine, to be creative, to hope and dream, and to infuse the world with meaning. It is limited neither by personal experience nor **(1)** \_\_\_\_\_ reality. Believing involves commitment and **(2)** \_\_\_\_\_, requiring devotion to future possibilities. Such belief systems often guide human behavior, influence decisions, and shape cultures. Without belief, individuals may struggle to find **(3)** \_\_\_\_\_ or direction in life, reducing emotional and **(4)** \_\_\_\_\_ resilience.

**Answers****Blank Answer**

- 1 objective
  - 2 investment
  - 3 purpose
  - 4 psychological
- 

**4. Library Catalog**

In this tutorial, we explain how to find specific journal articles using the library catalog. The university provides access to over (1) \_\_\_\_\_ journals across a wide range of subjects. Most of these resources are available (2) \_\_\_\_\_, allowing students to search efficiently. Learning how to navigate the catalog saves (3) \_\_\_\_\_ and ensures academic research is both accurate and reliable. Proper use of the system greatly improves (4) \_\_\_\_\_ productivity.

**Answers****Blank Answer**

- 1 18,000
  - 2 electronically
  - 3 time
  - 4 research
- 

**5. Life on Mars**

The search for life on Mars is difficult because even if life once existed, the chances of it being (1) \_\_\_\_\_ are extremely small. Using Earth as a (2) \_\_\_\_\_, scientists know that fossil evidence is rare. Current exploration focuses on identifying (3) \_\_\_\_\_ environments where water may have existed. Researchers also examine possible (4) \_\_\_\_\_ sources that could have supported life in the past.

**Answers****Blank Answer**

- 1     preserved
  - 2     comparison
  - 3     habitable
  - 4     energy
- 

**6. Green Chemistry**

Green chemistry is a scientific concept designed to develop (1) \_\_\_\_\_ that allow chemical processes to occur with minimal environmental damage. It promotes environmentally (2) \_\_\_\_\_ practices and safer chemical products. The goal is to reduce hazardous substances while maintaining efficiency and innovation. By applying green chemistry principles, industries can lower (3) \_\_\_\_\_ and improve long-term (4) \_\_\_\_\_ sustainability.

**Answers****Blank Answer**

- 1     methods
  - 2     friendly
  - 3     pollution
  - 4     environmental
- 

**7. Corporate Culture**

For many years, it has been widely accepted and rarely (1) \_\_\_\_\_ that strong corporate culture leads to success. However, recent studies have raised (2) \_\_\_\_\_ about this belief. A company's internal structure may be strong but still (3) \_\_\_\_\_. When everyone follows the same direction blindly, poor decisions may result. Therefore, culture must align with strategy to ensure (4) \_\_\_\_\_ performance.

## PREPWITHDALJEET

### Answers

#### Blank Answer

- 1     questioned
  - 2     doubts
  - 3     misguided
  - 4     effective
- 

### 8. Water Crisis

This issue was not simply part of poor **(1)** \_\_\_\_\_, but a sign of deeper environmental problems in South Australia. It highlighted warnings from water **(2)** \_\_\_\_\_ and climate scientists. These experts emphasized the growing pressure on limited water supplies. The crisis revealed the **(3)** \_\_\_\_\_ consequences of mismanagement and the urgent need for **(4)** \_\_\_\_\_ reform.

### Answers

#### Blank Answer

- 1     planning
  - 2     authorities
  - 3     long-term
  - 4     policy
- 

### 9. Cars in America

There are approximately 250 million cars in the United States, most of which are powered by **(1)** \_\_\_\_\_ fuel. This creates a major environmental **(2)** \_\_\_\_\_, especially due to limited oil supplies. In addition, vehicle emissions contribute significantly to **(3)** \_\_\_\_\_ pollution. As fuel consumption rises, concerns over sustainability and **(4)** \_\_\_\_\_ dependence continue to grow.

**Answers****Blank Answer**

- 1 gasoline
  - 2 challenge
  - 3 air
  - 4 energy
- 

**10. Sunflowers by Van Gogh**

These two paintings, both titled *Sunflowers*, are considered the finest (1) \_\_\_\_\_ of Van Gogh's floral works. Painted during his time in Arles, they feature thick-stemmed blooms and bold colors. The first version is particularly (2) \_\_\_\_\_ for its vibrant yellow tones. These works reflect the artist's emotional (3) \_\_\_\_\_ and his innovative use of (4) \_\_\_\_\_ technique.

**Answers****Blank Answer**

- 1 examples
- 2 admired
- 3 intensity
- 4 brushwork

**11. British Library**

To begin with, you should be standing on the main (1) \_\_\_\_\_ of the British Library. The library is located on Euston Road and is one of the largest research libraries in the world. Visitors enter through a spacious (2) \_\_\_\_\_, where exhibitions and information desks are situated. The building provides access to millions of (3) \_\_\_\_\_ and serves as a major center for academic (4) \_\_\_\_\_.

**Answers**

**Blank Answer**

- 1 entrance
  - 2 foyer
  - 3 documents
  - 4 research
- 

**12. Rebuilding**

Rebuilding carbon-rich agricultural soils is one of the most effective (1) \_\_\_\_\_ to remove excess carbon dioxide from the atmosphere. Scientists argue that healthy soil can act as a natural (2) \_\_\_\_\_ for carbon storage. This process also improves soil fertility and (3) \_\_\_\_\_ crop productivity. Therefore, rebuilding soil is seen as a sustainable and long-term (4) \_\_\_\_\_ to climate change.

**Answers****Blank Answer**

- 1 solutions
  - 2 sink
  - 3 increases
  - 4 response
- 

**13. Online Dating**

Researchers studied interactions on a large (1) \_\_\_\_\_ online dating platform to understand messaging behavior. Users were ranked by (2) \_\_\_\_\_ using response rates and preferences. The study found that individuals often message others considered more attractive than themselves. This pattern highlights (3) \_\_\_\_\_ inequalities and influences user (4) \_\_\_\_\_ on such platforms.

**Answers**

**Blank Answer**

- 1 popular
  - 2 desirability
  - 3 social
  - 4 behavior
- 

**14. Trading in Financial Markets**

Financial markets experienced extreme (1) \_\_\_\_\_ yesterday due to heavy selling and investor concern. Fears about a global financial (2) \_\_\_\_\_ led to widespread uncertainty. Rapid movements in stock prices reflected panic rather than rational decision-making. Such market behavior demonstrates how quickly (3) \_\_\_\_\_ sentiment can shift during periods of economic (4) \_\_\_\_\_.

**Answers****Blank Answer**

- 1 volatility
  - 2 crisis
  - 3 investor
  - 4 instability
- 

**15. Ocean Currents**

For many years, scientists warned that changes in ocean currents could (1) \_\_\_\_\_ Europe's climate. These currents transport heat across vast distances and help regulate global temperatures. A disruption could lead to cooler regional conditions. However, recent research suggests the system is more (2) \_\_\_\_\_ than once believed, although continued (3) \_\_\_\_\_ remains essential due to ongoing (4) \_\_\_\_\_ change.

**Answers**

## PREPWITHDALJEET

### Blank Answer

- 1 cool
  - 2 stable
  - 3 monitoring
  - 4 climate
- 

### 16. William Shakespeare

Despite his global fame, William Shakespeare remains a somewhat **(1)** \_\_\_\_\_ figure in terms of personal history. Only limited historical **(2)** \_\_\_\_\_ exist about his life. Most information comes from legal records and references by contemporaries. This lack of detail has encouraged extensive **(3)** \_\_\_\_\_ and scholarly **(4)** \_\_\_\_\_ about his identity and works.

### Answers

#### Blank Answer

- 1 mysterious
  - 2 evidence
  - 3 speculation
  - 4 debate
- 

### 17. Laurence Stephen Lowry

Laurence Stephen Lowry was an English artist known for his **(1)** \_\_\_\_\_ industrial scenes. He lived and worked in Lancashire for over forty years, depicting factories and urban life. His paintings often feature **(2)** \_\_\_\_\_ figures and muted colors. Today, his work is considered an important **(3)** \_\_\_\_\_ of British cultural history and continues to receive **(4)** \_\_\_\_\_ recognition.

### Answers

**Blank Answer**

- 1 distinctive
  - 2 simplified
  - 3 record
  - 4 international
- 

**18. Central Pattern Generator**

In animals, movement is controlled by a neural network called the Central Pattern **(1)** \_\_\_\_\_. This system produces rhythmic signals that coordinate muscle activity. It allows actions such as walking or swimming to occur **(2)** \_\_\_\_\_, without conscious thought. Understanding this process helps scientists study motor control and develop **(3)** \_\_\_\_\_ treatments for neurological **(4)** \_\_\_\_\_.

**Answers****Blank Answer**

- 1 Generator
  - 2 automatically
  - 3 effective
  - 4 disorders
- 

**19. US High School**

A majority of U.S. high school students report feeling **(1)** \_\_\_\_\_ during class on a daily basis. Studies also show that more than one in five students has **(2)** \_\_\_\_\_ considered dropping out. These trends raise serious concerns about student **(3)** \_\_\_\_\_ and mental well-being. Addressing these issues requires educational reform and improved **(4)** \_\_\_\_\_ support systems.

**Answers**

## PREPWITHDALJEET

### Blank Answer

- 1     bored
  - 2     seriously
  - 3     engagement
  - 4     academic
- 

### 20. Integrated Ticket

In 2004, integrated ticketing was introduced in South East Queensland. This system allowed passengers to travel across all **(1)** \_\_\_\_\_ transport modes using a single paper ticket. It simplified travel and improved **(2)** \_\_\_\_\_ convenience. The integration reduced confusion and encouraged greater use of public **(3)** \_\_\_\_\_, leading to improved urban **(4)** \_\_\_\_\_ mobility.

### Answers

#### Blank Answer

- 1     public
- 2     passenger
- 3     transport
- 4     mobility

### 21. Neo-Latin

Those of you who have never heard the term Neo-Latin may be forgiven for thinking it refers to a modern trend. However, it actually relates to the **(1)** \_\_\_\_\_ used by scholars after the classical Roman period. Neo-Latin was widely used for academic and scientific writing. It played an important **(2)** \_\_\_\_\_ in education and communication across Europe. Understanding Neo-Latin helps explain the **(3)** \_\_\_\_\_ of many modern languages and historical **(4)** \_\_\_\_\_ texts.

### Answers

**Blank Answer**

- 1 language
  - 2 role
  - 3 development
  - 4 academic
- 

**22. Traffic Jams**

Japanese researchers recently conducted a real-life experiment to understand how traffic jams can form (1) \_\_\_\_\_. They placed several vehicles on a circular track and asked drivers to maintain a constant speed. Despite no accidents or obstacles, congestion still developed. This study demonstrated how small (2) \_\_\_\_\_ in driver behavior can lead to major traffic (3) \_\_\_\_\_. The findings have important (4) \_\_\_\_\_ for transport planning.

**Answers****Blank Answer**

- 1 spontaneously
  - 2 variations
  - 3 congestion
  - 4 implications
- 

**23. Patriotism**

The effect of representative democracy is to refine and (1) \_\_\_\_\_ public views by passing them through a selected group of citizens. These representatives are expected to exercise wisdom and (2) \_\_\_\_\_ judgment. This process helps protect national interests while balancing popular opinion. Such a system strengthens (3) \_\_\_\_\_ decision-making and ensures that patriotism is guided by reason rather than (4) \_\_\_\_\_ emotion.

**Answers**

**Blank Answer**

- 1     enlarge
  - 2     informed
  - 3     political
  - 4     blind
- 

**24. Warmer Ocean**

Recent studies show that the ocean has been getting **(1)** \_\_\_\_\_, which indicates changes in marine ecosystems. This shift suggests a decline in microscopic plants that give the ocean its color. These organisms play a crucial **(2)** \_\_\_\_\_ in absorbing carbon dioxide. A reduction in their population could **(3)** \_\_\_\_\_ global warming effects. Therefore, ocean color changes are a serious **(4)** \_\_\_\_\_ warning.

**Answers****Blank Answer**

- 1     bluer
  - 2     role
  - 3     accelerate
  - 4     environmental
- 

**25. Beautiful Buildings**

Over the years, architects have designed **(1)** \_\_\_\_\_ beautiful buildings, some of which have received international recognition. Two of these structures have won major **(2)** \_\_\_\_\_ for design excellence. Such achievements highlight innovation in sustainable architecture. These buildings also reflect a strong **(3)** \_\_\_\_\_ to environmental responsibility and cultural identity, setting new **(4)** \_\_\_\_\_ for future construction.

**Answers**

## PREPWITHDALJEET

### Blank Answer

- 1     remarkably
- 2     awards
- 3     commitment
- 4     standards

### Write from Dictation

#### Write From Dictation: 1–100 (Semi-Formal)

1. Traffic remains the primary cause of air pollution in major metropolitan areas.
2. The nation achieved prosperity by opening its domestic ports for international trade.
3. There is an ongoing academic debate regarding the true value of knowledge.
4. Information technology has fundamentally changed the way students conduct research today.
5. Modern accounting practices are more essential for business operations than ever before.
6. Most students require reliable computer access to complete their weekly homework.
7. Applicants must possess an undergraduate degree in biology to enroll in this course.
8. One does not require specialist knowledge to enjoy the contents of this book.
9. Statistical figures can be established through a process of rigorous evaluation.
10. It is important to keep your target audience in mind when composing an essay.
11. The elephant is recognized as the largest animal currently living on land.
12. History courses can significantly improve our ability to think critically.
13. Effective presenters maintain consistent eye contact with their entire audience.
14. This specific course places a considerable emphasis on critical thinking skills.
15. Graduates from this program generally find employment within the insurance industry.
16. The university will hold a formal celebration for the graduating students.

## PREPWITHDALJEET

17. Formal course study is a valuable method for achieving professional development.
18. Fostering creativity is often considered more important for undergraduate students.
19. More research is urgently required in this particular field of scientific study.
20. Students are expected to live in the residence hall during the academic term.
21. The research results highlighted the importance of maintaining an ecosystem's balance.
22. In the top left corner is the grinding shop where tools are professionally polished.
23. All students are expected to participate actively in all scheduled class activities.
24. Students will analyze the classical literature of Ancient Greece this semester.
25. Please remember to turn off the lights to conserve energy in the building.
26. Online courses allow students to work at their own pace from any location.
27. The introduction of railways contributed greatly to the industrial revolution.
28. You must contact your local doctor to schedule a formal appointment.
29. Teaching assistants will receive a monthly stipend to assist with housing costs.
30. The final essay will be published once the primary research is concluded.
31. The examination system has been upgraded to accommodate professional standards.
32. The faculty staff members are very approachable, helpful, and extremely friendly.
33. The lecture tomorrow will analyze the educational policies of the United States.
34. The university theater group will perform in the main concert hall tonight.
35. It is argued that students learn more through collaboration than as individuals.
36. Humans utilize symbolic language to communicate complex plans and contentions.
37. The university library holds an extensive collection of historical geological maps.
38. The university is seeking external funding for a project on climate change mitigation.
39. Open days for undergraduates occur throughout the year for prospective campus visits.
40. Astronomers can observe stars that were formed over thirteen billion years ago.
41. Research indicates that both knowledge and experience are essential for creativity.

## PREPWITHDALJEET

42. Please be advised that the scheduled seminar has been canceled until further notice.
43. A high-quality academic paper should be clear, concise, and well-structured.
44. Every student possesses the fundamental right and ability to succeed academically.
45. Consistent daily practice can build confidence and significantly improve your skills.
46. Undergraduates require specific primary sources to analyze the assigned program.
47. Rapid urbanization often increases the living costs for surrounding communities.
48. Globalization in the modern world consistently leads to significant economic growth.
49. Social media plays a role in helping governments address various social problems.
50. Employment figures are projected to decrease slightly over the next few years.
51. The digital revolution has fundamentally changed the way society consumes literature.
52. The nation achieved economic prosperity by opening its trade ports to the world.
53. Despite their differences, all forms of life share certain core characteristics.
54. Native speakers are typically exempt from language proficiency tests in their own tongue.
55. The employment opportunities available in engineering are currently increasing rapidly.
56. The garden behind the university remains open to the general public during summer.
57. The new technician accidentally dropped the microscope in the biology laboratory.
58. The reception staff provides professional advice on securing private accommodation.
59. This essay will argue that modern technology provides more benefits than harm.
60. Ensure you choose a degree course that provides excellent career opportunities.
61. The marketing budget has doubled since the beginning of the current fiscal year.
62. I will return to this specific point in a moment to explain further.
63. The academic curriculum needs to be adjusted to meet modern development goals.
64. Students requiring a deadline extension should apply sooner rather than later.
65. While the other book is not as thorough, it is arguably more insightful.
66. Students will focus on reporting news regarding the changing world of media.

## PREPWITHDALJEET

67. It is a comprehensive program that effectively comprises both theory and practice.
68. She previously served as the chief editor of the official student newspaper.
69. Students are advised to utilize multiple research methods for this final project.
70. Textile manufacturing continues to play a large role in improving national economies.
71. The archaeologists' new discoveries stand out among previously overlooked foundations.
72. Students are encouraged to think carefully about their long-term accommodation needs.
73. Observers waited nervously and with bated breath for the concert to begin.
74. The design team will complete the project plan later this afternoon.
75. This course is considered integrated because it consists of several distinct parts.
76. The new research paper challenged many previously accepted scientific theories.
77. The railway network makes long-distance travel accessible for the general population.
78. Scientists have discovered that most studies today focus on environmental impact.
79. The ways in which people communicate are constantly evolving in the digital age.
80. Understanding how to navigate the library will save you a significant amount of time.
81. Writing a final essay is relatively easy once the primary research is finished.
82. The summer course was unfortunately canceled due to insufficient student enrollments.
83. Those considering a career in marketing should attend the introductory talk.
84. A successful research assistant should not be afraid to ask challenging questions.
85. An architect requires advanced problem-solving skills and a keen eye for design.
86. The scientific research has produced several other unexpected results recently.
87. The professor took a sabbatical year to focus on finishing her new book.
88. Please note that the seminar has been canceled due to a lack of enrollment.
89. Globalization has become an overwhelming phenomenon for urban development.
90. The use of wind energy has increased rapidly across the country this decade.
91. Further research is required in the specialized field of food science.

## PREPWITHDALJEET

92. Unregulated development can have a significant negative impact on the environment.
93. For the purpose of this research, data should be collected and analyzed carefully.
94. An archaeologist's new discovery stands out in previously overlooked foundations.
95. Employment figures are expected to improve significantly in the next few years.
96. Sustainable agricultural development is vital for supporting poor rural areas.
97. Social media is often criticized for contributing to widespread internet addiction.
98. Formal criminal charges will be brought against all the men involved in the case.
99. A fundamental function of modern computing is counting and calculating data.
100. Building professional trust is not something that can be achieved overnight.